

Anti-ANXA2 Antibody (R1L06)

Summary

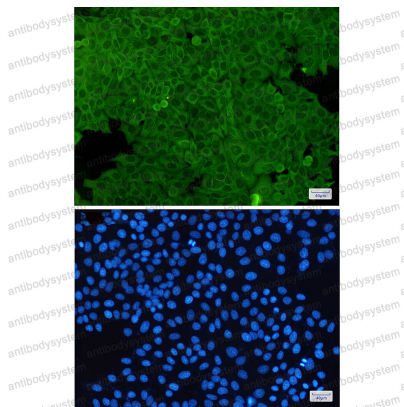
Catalog No.	RHC25402
Clone ID	R1L06
Host species	Rabbit
Tested applications	IF: 1:50-1:200, WB: 1:500-1:1000
Species reactivity	Human, Mouse, Rat
Form	Liquid
Storage buffer	0.01M PBS, pH 7.4, 0.05% BSA, 50% Glycerol, 0.05% Sodium azide.
Concentration	1 mg/ml
Purity	>95% by SDS-PAGE.
Clonality	Monoclonal
Isotype	IgG
Applications	IF, WB
Target	Lipocortin II, Annexin A2, Calpactin-1 heavy chain, PAP-IV, p36, CAL1H, Calpactin I heavy chain, ANX2, ANX2L4, Protein I, Annexin-2, LPC2D, Annexin II, ANXA2, Placental anticoagulant protein IV, Chromobindin-8
Purification	Protein A/G purified from cell culture supernatant.
Endotoxin level	Please contact with the lab for this information.
Accession	P07355

Stability and Storage

Use a manual defrost freezer and avoid repeated freeze thaw cycles. Store at 4 °C for frequent use. Store at -20 °C for twelve months from the date of receipt.

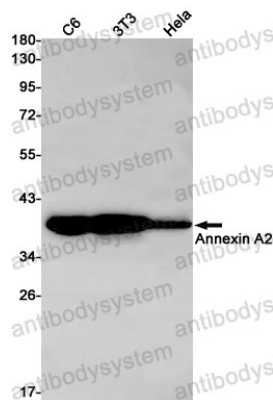
Note

For research use only.

Data Image

Immunofluorescence

Immunocytochemistry analysis of Annexin A2(green) in HeLa using Annexin A2 antibody, and DAPI(blue)



Western blot

Western blot analysis of Annexin A2 in C6, 3T3, HeLa lysates using Annexin A2 antibody.