

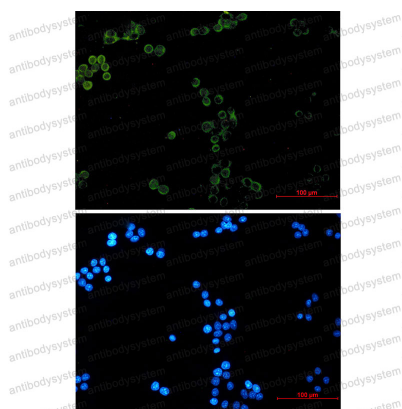
Anti-GPX1 Antibody (R1K92)

Summary

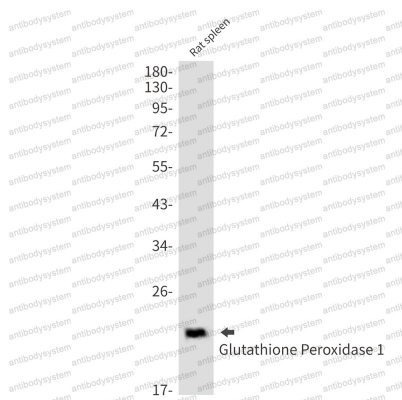
Catalog No.	RHC23701
Clone ID	R1K92
Host species	Rabbit
Tested applications	IF: 1:50-1:200, IP: 1:20, WB: 1:500-1:1000
Species reactivity	Human, Rat
Form	Liquid
Storage buffer	0.01M PBS, pH 7.4, 0.05% BSA, 50% Glycerol, 0.05% Sodium azide.
Concentration	1 mg/ml
Purity	>95% by SDS-PAGE.
Clonality	Monoclonal
Isotype	IgG
Applications	IF, IP, WB
Target	Cellular glutathione peroxidase, Glutathione peroxidase 1, GPx-1, GPX1, GSHPx-1
Purification	Protein A/G purified from cell culture supernatant.
Endotoxin level	Please contact with the lab for this information.
Accession	P07203
Stability and Storage	Use a manual defrost freezer and avoid repeated freeze thaw cycles. Store at 4 °C for frequent use. Store at -20 °C for twelve months from the date of receipt.

Note

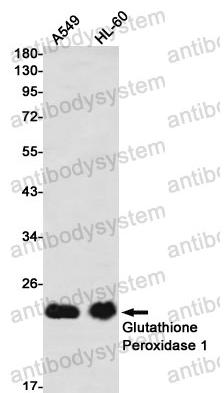
For research use only.

Data Image**Immunofluorescence**

Immunocytochemistry analysis of Glutathione Peroxidase 1 (green) in Hela using Glutathione Peroxidase 1 antibody, and DAPI (blue).

**Western blot**

Western blot analysis of Glutathione Peroxidase 1 in rat spleen lysates using Glutathione Peroxidase 1 antibody.



Western blot

Western blot analysis of Glutathione Peroxidase 1 in A549, HL-60 lysates using Glutathione Peroxidase 1 antibody