

# Anti-GLA Antibody (R1K51)

## Summary

---

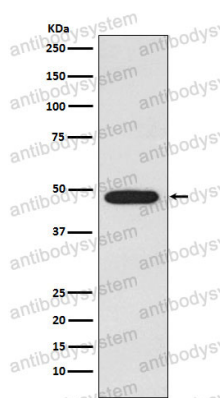
<b>Catalog No.</b>	RHC19502
<b>Clone ID</b>	R1K51
<b>Host species</b>	Rabbit
<b>Tested applications</b>	FCM: 1:20-1:100, IF: 1:50-1:200, IHC: 1:100-1:200, IP: 1:20-1:50, WB: 1:1000-1:2000
<b>Species reactivity</b>	Human
<b>Form</b>	Liquid
<b>Storage buffer</b>	0.01M PBS, pH 7.4, 0.05% BSA, 50% Glycerol, 0.05% Sodium azide.
<b>Concentration</b>	1 mg/ml
<b>Purity</b>	>95% by SDS-PAGE.
<b>Clonality</b>	Monoclonal
<b>Isotype</b>	IgG
<b>Applications</b>	FCM, IF, IHC, IP, WB
<b>Target</b>	Alpha-D-galactosidase A, Galactosylgalactosylglucosylceramidase GLA, GLA, Melibiase, Agalsidase, Alpha-D-galactoside galactohydrolase, Alpha-galactosidase A
<b>Purification</b>	Protein A/G purified from cell culture supernatant.
<b>Endotoxin level</b>	Please contact with the lab for this information.
<b>Accession</b>	P06280

**Stability and Storage**

Use a manual defrost freezer and avoid repeated freeze thaw cycles. Store at 4 °C for frequent use. Store at -20 °C for twelve months from the date of receipt.

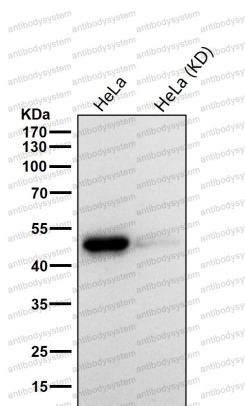
**Note**

For research use only.

**Data Image**

Western blot

Western blot analysis of Galactosidase alpha expression in MCF-7 cell lysate.



Western blot

All lanes use the Antibody at 1:1K dilution for 1 hour at room temperature.