

# Recombinant Human CD3E Protein, C-His

## Summary

---

<b>Catalog No.</b>	EHC27701
<b>Alternative Names</b>	T3E, T-cell surface antigen T3/Leu-4 epsilon chain, CD3e, CD3E, T-cell surface glycoprotein CD3 epsilon chain
<b>Form</b>	Lyophilized
<b>Storage buffer</b>	Lyophilized from a solution in PBS pH 7.4, 1mM EDTA, 4% Trehalose, 1% Mannitol.
<b>Purity</b>	>90% as determined by SDS-PAGE.
<b>Applications</b>	ELISA, Immunogen, SDS-PAGE, WB, Bioactivity testing in progress
<b>Endotoxin level</b>	Please contact with the lab for this information.
<b>Expression system</b>	Mammalian Cells
<b>Accession</b>	P07766
<b>Protein length</b>	Met1-Asp126
<b>Nature</b>	Recombinant
<b>Predicted molecular weight</b>	15.13 kDa
<b>Stability and Storage</b>	Use a manual defrost freezer and avoid repeated freeze thaw cycles. Store at 2 to 8°C for frequent use. Store at -20 to -80°C for twelve months from the date of receipt.
<b>Reconstitution</b>	Reconstitute in sterile water for a stock solution. A copy of datasheet will be provided with the products, please refer to it for details.
<b>Species</b>	Homo sapiens (Human)

## Recombinant Proteins & Antibodies

### Shipping

In general, proteins are provided as lyophilized powder/frozen liquid. They are shipped out with dry ice/blue ice unless customers require otherwise.

### Note

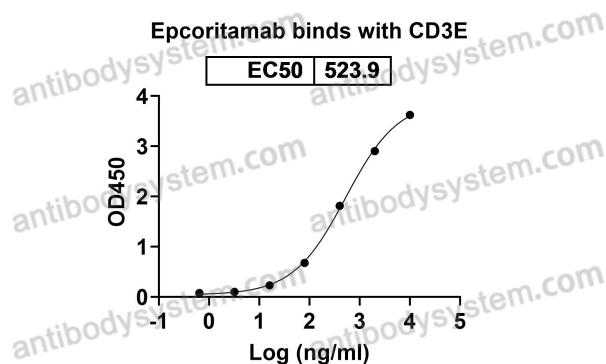
For research use only.

## Data Image



SDS-PAGE

SDS PAGE for recombinant Human CD3E

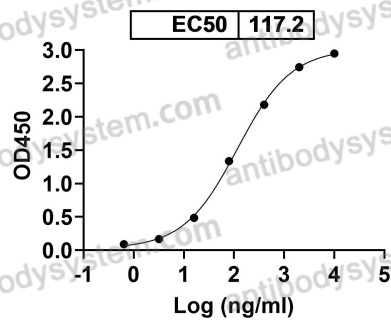


Bioactivity

Detects Epcoritamab in indirect ELISAs.



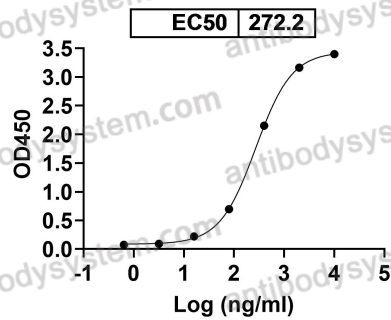
Glofitamab binds with CD3E



Detects Glofitamab in indirect ELISAs.

Bioactivity

Pasotuxizumab binds with CD3E



Detects Pasotuxizumab in indirect ELISAs.

Bioactivity