

Anti-MMP1 Antibody (R1J32)

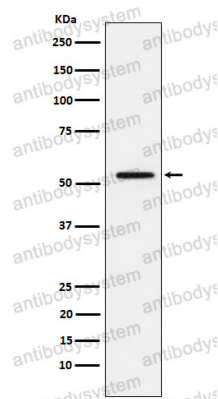
Summary

Catalog No.	RHC04401
Clone ID	R1J32
Host species	Rabbit
Tested applications	IP: 1:20-1:50, WB: 1:1000-1:2000
Species reactivity	Human
Form	Liquid
Storage buffer	0.01M PBS, pH 7.4, 0.05% BSA, 50% Glycerol, 0.05% Sodium azide.
Concentration	1 mg/ml
Purity	>95% by SDS-PAGE.
Clonality	Monoclonal
Isotype	IgG
Applications	IP, WB
Target	MMP1, MMP-1, Matrix metalloproteinase-1, CLG, Interstitial collagenase, Fibroblast collagenase
Purification	Protein A/G purified from cell culture supernatant.
Endotoxin level	Please contact with the lab for this information.
Accession	P03956
Stability and Storage	Use a manual defrost freezer and avoid repeated freeze thaw cycles. Store at 4 °C for frequent use. Store at -20 °C for twelve months from the date of receipt.

Note

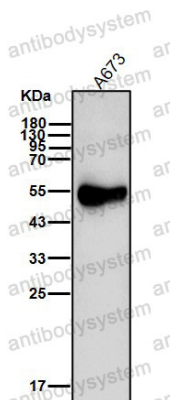
For research use only.

Data Image



Western blot

Western blot analysis of MMP1 expression in A431 cell lysate.



Western blot

All lanes use the Antibody at 1:1K dilution for 1 hour at room temperature.