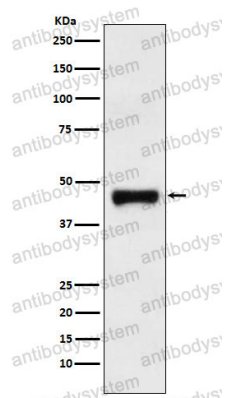


Anti-LRG1 Antibody (R1J07)

Summary

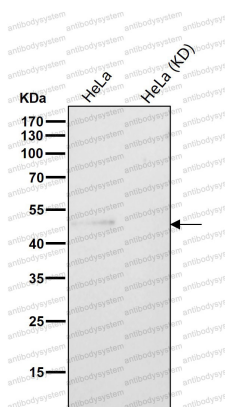
| | |
|------------------------------|---|
| Catalog No. | RHC00702 |
| Clone ID | R1J07 |
| Host species | Rabbit |
| Tested applications | IHC: 1:100-1:200, IP: 1:20-1:50, WB: 1:1000-1:2000 |
| Species reactivity | Human |
| Form | Liquid |
| Storage buffer | 0.01M PBS, pH 7.4, 0.05% BSA, 50% Glycerol, 0.05% Sodium azide. |
| Concentration | 1 mg/ml |
| Purity | >95% by SDS-PAGE. |
| Clonality | Monoclonal |
| Isotype | IgG |
| Applications | IHC, IP, WB |
| Target | LRG1, LRG, Leucine-rich alpha-2-glycoprotein |
| Purification | Protein A/G purified from cell culture supernatant. |
| Endotoxin level | Please contact with the lab for this information. |
| Accession | P02750 |
| Stability and Storage | Use a manual defrost freezer and avoid repeated freeze thaw cycles. Store at 4 °C for frequent use. Store at -20 °C for twelve months from the date of receipt. |
| Note | For research use only. |

Data Image



Western blot

Western blot analysis of LRG1 expression in Human plasma lysate.



Western blot

All lanes use the Antibody at 1:1K dilution for 1 hour at room temperature.