

Anti-APOH Antibody (R1J06)

Summary

Catalog No.	RHC00602
Clone ID	R1J06
Host species	Rabbit
Tested applications	IF: 1:50-1:200, IP: 1:20-1:50, WB: 1:1000-1:2000
Species reactivity	Human, Rat
Form	Liquid
Storage buffer	0.01M PBS, pH 7.4, 0.05% BSA, 50% Glycerol, 0.05% Sodium azide.
Concentration	1 mg/ml
Purity	>95% by SDS-PAGE.
Clonality	Monoclonal
Isotype	IgG
Applications	IF, IP, WB
Target	Beta-2-glycoprotein 1, APC inhibitor, Apo-H, Activated protein C-binding protein, Beta(2)GPI, Anticardiolipin cofactor, Beta-2-glycoprotein I, APOH, Apolipoprotein H, B2G1, B2GPI
Purification	Protein A/G purified from cell culture supernatant.
Endotoxin level	Please contact with the lab for this information.
Accession	P02749

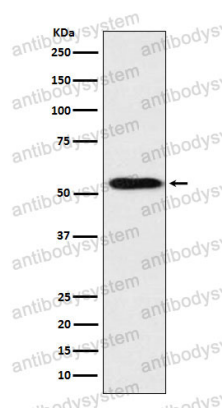
Stability and Storage

Use a manual defrost freezer and avoid repeated freeze thaw cycles. Store at 4 °C for frequent use. Store at -20 °C for twelve months from the date of receipt.

Note

For research use only.

Data Image



Western blot

Western blot analysis of ApoH expression in Human plasma lysate.