

Anti-KRT14 Antibody (R1H89)

Summary

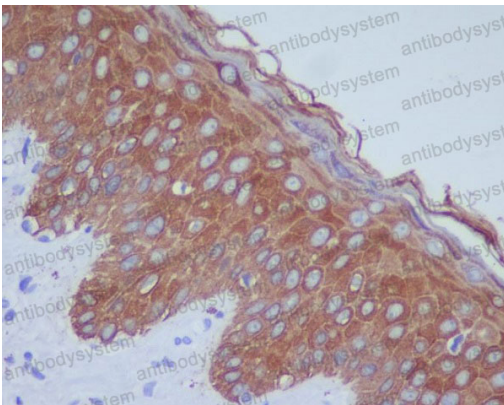
Catalog No.	RHB98002
Clone ID	R1H89
Host species	Rabbit
Tested applications	FCM: 1:20-1:100, IF: 1:50-1:200, IHC: 1:100-1:200, IP: 1:20-1:50, WB: 1:1000-1:2000
Species reactivity	Human
Form	Liquid
Storage buffer	0.01M PBS, pH 7.4, 0.05% BSA, 50% Glycerol, 0.05% Sodium azide.
Concentration	1 mg/ml
Purity	>95% by SDS-PAGE.
Clonality	Monoclonal
Isotype	IgG
Applications	FCM, IF, IHC, IP, WB
Target	Keratin-14, K14, CK-14, Cytokeratin-14, KRT14, Keratin, type I cytoskeletal 14
Purification	Protein A/G purified from cell culture supernatant.
Endotoxin level	Please contact with the lab for this information.
Accession	P02533

Stability and Storage

Use a manual defrost freezer and avoid repeated freeze thaw cycles. Store at 4 °C for frequent use. Store at -20 °C for twelve months from the date of receipt.

Note

For research use only.

Data Image

Immunohistochemical

Immunohistochemical analysis of paraffin-embedded human skin, using Cytokeratin 14 Antibody.



Western blot

Western blot analysis of Cytokeratin 14 expression in A431 cell lysate.