

Anti-CRYAA Antibody (R1H87)

Summary

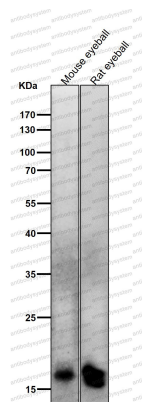
Catalog No.	RHB97801
Clone ID	R1H87
Host species	Rabbit
Tested applications	IF: 1:50-1:200, WB: 1:1000-1:2000
Species reactivity	Human, Mouse, Rat
Form	Liquid
Storage buffer	0.01M PBS, pH 7.4, 0.05% BSA, 50% Glycerol, 0.05% Sodium azide.
Concentration	1 mg/ml
Purity	>95% by SDS-PAGE.
Clonality	Monoclonal
Isotype	IgG
Applications	IF, WB
Target	CRYAA, HspB4, Heat shock protein beta-4, Alpha-crystallin A chain, HSPB4, CRYA1
Purification	Protein A/G purified from cell culture supernatant.
Endotoxin level	Please contact with the lab for this information.
Accession	P02489
Stability and Storage	Use a manual defrost freezer and avoid repeated freeze thaw cycles. Store at 4 °C for frequent use. Store at -20 °C for twelve months from the date of receipt.

Note

For research use only.

Data Image**Western blot**

Western blot analysis of CRYAA expression in Mouse eyeball lysate.

**Western blot**

All lanes use the Antibody at 1:1K dilution for 1 hour at room temperature.