

Anti-c-Myc Antibody (R1H66)

Summary

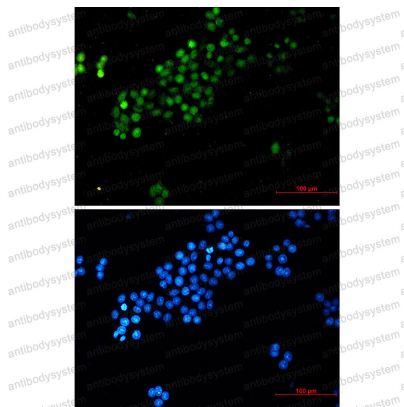
Catalog No.	RHB90801
Clone ID	R1H66
Host species	Rabbit
Tested applications	IF: 1:50-1:200, IP: 1:20, WB: 1:500-1:1000
Species reactivity	Human, Mouse, Rat
Form	Liquid
Storage buffer	0.01M PBS, pH 7.4, 0.05% BSA, 50% Glycerol, 0.05% Sodium azide.
Concentration	1 mg/ml
Purity	>95% by SDS-PAGE.
Clonality	Monoclonal
Isotype	IgG
Applications	IF, IP, WB
Target	Proto-oncogene c-Myc, BHLHE39, MYC, Myc proto-oncogene protein, bHLHe39, Transcription factor p64, Class E basic helix-loop-helix protein 39
Purification	Protein A/G purified from cell culture supernatant.
Endotoxin level	Please contact with the lab for this information.
Accession	P01106

Stability and Storage

Use a manual defrost freezer and avoid repeated freeze thaw cycles. Store at 4 °C for frequent use. Store at -20 °C for twelve months from the date of receipt.

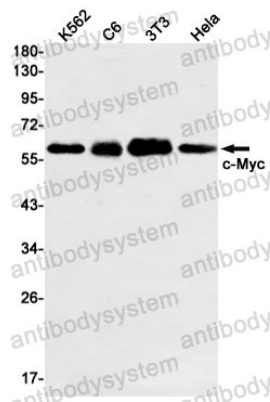
Note

For research use only.

Data Image

Immunofluorescence

Immunocytochemistry analysis of c-Myc (green) in HeLa using c-Myc antibody, and DAPI (blue).



Western blot

Western blot analysis of c-Myc in K562, C6, 3T3, HeLa lysates using c-Myc antibody.