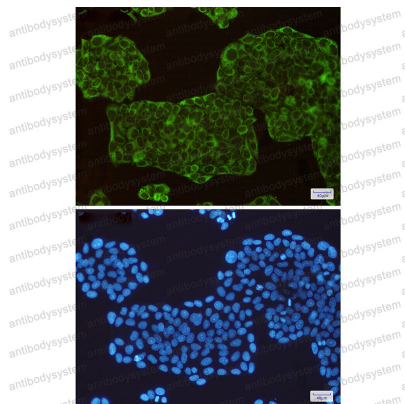


Anti-ASS1 Antibody (R1H49)

Summary

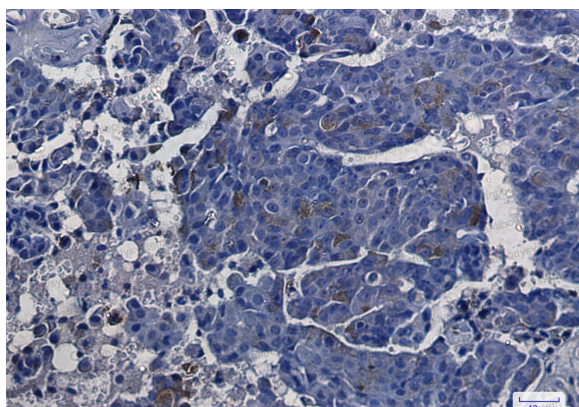
Catalog No.	RHB89101
Clone ID	R1H49
Host species	Rabbit
Tested applications	IF: 1:50-1:200, IHC: 1:50-1:100, IP: 1:20, WB: 1:500-1:1000
Species reactivity	Human, Rat
Form	Liquid
Storage buffer	0.01M PBS, pH 7.4, 0.05% BSA, 50% Glycerol, 0.05% Sodium azide.
Concentration	1 mg/ml
Purity	>95% by SDS-PAGE.
Clonality	Monoclonal
Isotype	IgG
Applications	IF, IHC, IP, WB
Target	ASS1, Citrulline--aspartate ligase, Argininosuccinate synthase, ASS
Purification	Protein A/G purified from cell culture supernatant.
Endotoxin level	Please contact with the lab for this information.
Accession	P00966
Stability and Storage	Use a manual defrost freezer and avoid repeated freeze thaw cycles. Store at 4 °C for frequent use. Store at -20 °C for twelve months from the date of receipt.
Note	For research use only.

Data Image



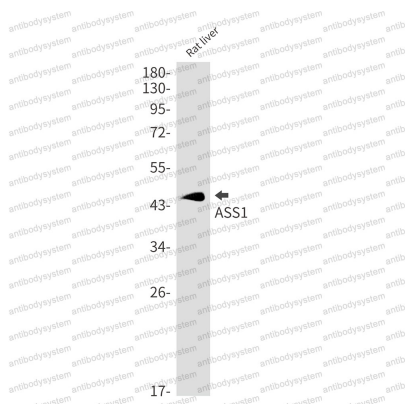
Immunofluorescence

Immunocytochemistry analysis of ASS1(green) in Hela using ASS1 antibody, and DAPI(blue)



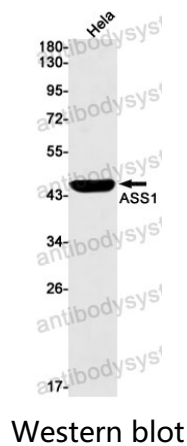
Immunohistochemical

Immunohistochemistry analysis of paraffin-embedded Human breast cancer using ASS1 antibody. High-pressure and temperature Sodium Citrate pH 6.0 was used for antigen retrieval.



Western blot

Western blot analysis of ASS1 in rat liver lysates using ASS1 antibody.



Western blot analysis of ASS1 in HeLa lysates using ASS1 antibody.