

# Anti-BCL10 Antibody (R1G87)

## Summary

---

<b>Catalog No.</b>	RHB82402
<b>Clone ID</b>	R1G87
<b>Host species</b>	Rabbit
<b>Tested applications</b>	WB: 1:500-1:1000
<b>Species reactivity</b>	Human, Mouse, Rat
<b>Form</b>	Liquid
<b>Storage buffer</b>	0.01M PBS, pH 7.4, 0.05% BSA, 50% Glycerol, 0.05% Sodium azide.
<b>Concentration</b>	1 mg/ml
<b>Purity</b>	>95% by SDS-PAGE.
<b>Clonality</b>	Monoclonal
<b>Isotype</b>	IgG
<b>Applications</b>	WB
<b>Target</b>	CED-3/ICH-1 prodomain homologous E10-like regulator, CLAP, B-cell CLL/lymphoma 10, BCL10, CARD-containing molecule enhancing NF-kappa-B, Cellular homolog of vCARMEN, cCARMEN, CIPER, Bcl-10, hCLAP, Cellular-E10, CARD-like apoptotic protein, c-E10, Mammalian CARD-containing adapter molecule E10, B-cell lymphoma/leukemia 10, mE10
<b>Purification</b>	Protein A/G purified from cell culture supernatant.
<b>Endotoxin level</b>	Please contact with the lab for this information.
<b>Accession</b>	O95999

**Stability and Storage**

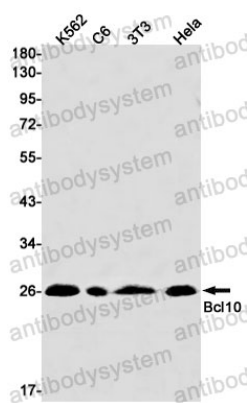
Use a manual defrost freezer and avoid repeated freeze thaw cycles. Store at 4 °C for frequent use. Store at -20 °C for twelve months from the date of receipt.

**Note**

For research use only.

**Data Image**

---



Western blot

Western blot analysis of Bcl10 in K562, C6, 3T3, HeLa lysates using Bcl10 antibody.