

Anti-SF3B1 Antibody (R1F46)

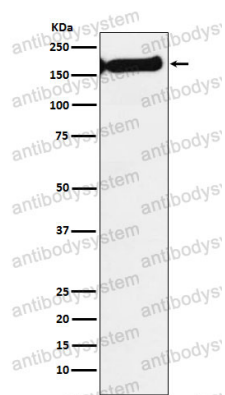
Summary

| | |
|------------------------------|---|
| Catalog No. | RHB24002 |
| Clone ID | R1F46 |
| Host species | Rabbit |
| Tested applications | FCM: 1:20-1:100, IF: 1:50-1:200, IHC: 1:100-1:200, WB: 1:1000-1:2000 |
| Species reactivity | Human, Mouse, Rat |
| Form | Liquid |
| Storage buffer | 0.01M PBS, pH 7.4, 0.05% BSA, 50% Glycerol, 0.05% Sodium azide. |
| Concentration | 1 mg/ml |
| Purity | >95% by SDS-PAGE. |
| Clonality | Monoclonal |
| Isotype | IgG |
| Applications | FCM, IF, IHC, WB |
| Target | SAP 155, SAP155, SF3B1, Pre-mRNA-splicing factor SF3b 155 kDa subunit, Splicing factor 3B subunit 1, Spliceosome-associated protein 155, SF3b155 |
| Purification | Protein A/G purified from cell culture supernatant. |
| Endotoxin level | Please contact with the lab for this information. |
| Accession | O75533 |
| Stability and Storage | Use a manual defrost freezer and avoid repeated freeze thaw cycles. Store at 4 °C for frequent use. Store at -20 °C for twelve months from the date of receipt. |

Note

For research use only.

Data Image



Western blot

Western blot analysis of SF3B1 expression in Jurkat cell lysate.