

# Anti-Phospho-Filamin A/B (Ser2152/Ser2107) Antibody (R1F23)

## Summary

---

<b>Catalog No.</b>	RHB17402
<b>Clone ID</b>	R1F23
<b>Host species</b>	Rabbit
<b>Tested applications</b>	IF: 1:50-1:200, IHC: 1:50-1:100, WB: 1:500-1:1000
<b>Species reactivity</b>	Human, Rat
<b>Form</b>	Liquid
<b>Storage buffer</b>	0.01M PBS, pH 7.4, 0.05% BSA, 50% Glycerol, 0.05% Sodium azide.
<b>Concentration</b>	1 mg/ml
<b>Purity</b>	>95% by SDS-PAGE.
<b>Clonality</b>	Monoclonal
<b>Isotype</b>	IgG
<b>Applications</b>	IF, IHC, WB
<b>Target</b>	FLN-B, Beta-filamin, Truncated ABP, Truncated actin-binding protein, TABP, FLN1L, Filamin homolog 1, Filamin-B, ABP-280 homolog, FLN3, TAP, Fh1, FLNB, Thyroid autoantigen, Filamin-3, ABP-278, Actin-binding-like protein
<b>Purification</b>	Protein A/G purified from cell culture supernatant.
<b>Endotoxin level</b>	Please contact with the lab for this information.
<b>Accession</b>	O75369

**Stability and Storage**

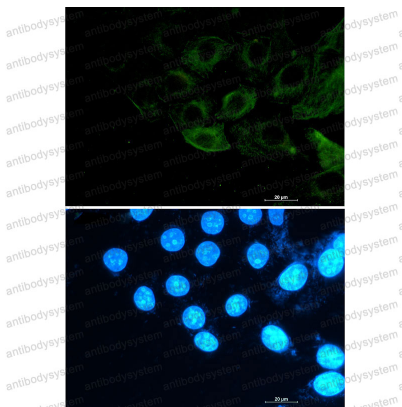
Use a manual defrost freezer and avoid repeated freeze thaw cycles. Store at 4 °C for frequent use. Store at -20 °C for twelve months from the date of receipt.

**Note**

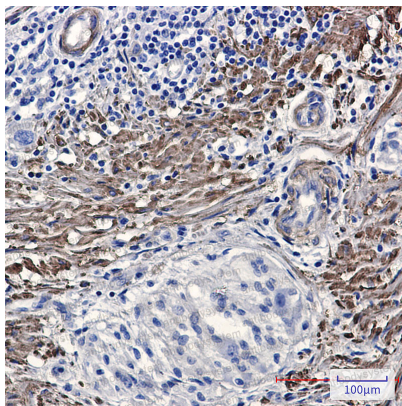
For research use only.

**Data Image**

---



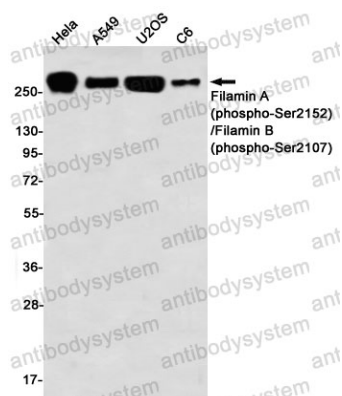
Immunofluorescence



Immunohistochemical

Immunocytochemistry analysis of Phospho-Filamin A/B (Ser2152/Ser2107) (green) in A549 using Phospho-Filamin A/B (Ser2152/Ser2107) antibody, and DAPI (blue).

Immunohistochemistry analysis of paraffin-embedded Human Cholangiocarcinoma using Filamin A (Phospho-Ser2152)/Filamin B (Phospho-Ser2107) antibody. High-pressure and temperature Sodium Citrate pH 6.0 was used for antigen retrieval.



Western blot

Western blot analysis of Filamin A (Phospho-Ser2152)/Filamin B (Phospho-Ser2107) in HeLa, A549, U2OS, C6 lysates using Filamin A (Phospho-Ser2152)/Filamin B (Phospho-Ser2107) antibody.