

Anti-MACROH2A1 Antibody (R1F22)

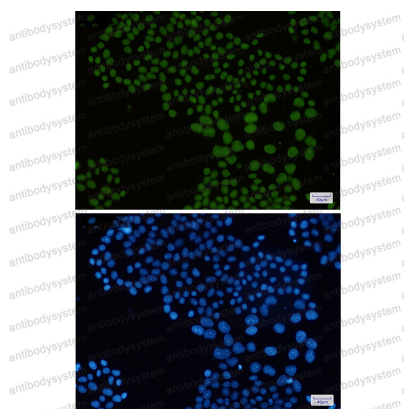
Summary

Catalog No.	RHB17201
Clone ID	R1F22
Host species	Rabbit
Tested applications	IF: 1:50-1:200, WB: 1:500-1:1000
Species reactivity	Mouse, Rat
Form	Liquid
Storage buffer	0.01M PBS, pH 7.4, 0.05% BSA, 50% Glycerol, 0.05% Sodium azide.
Concentration	1 mg/ml
Purity	>95% by SDS-PAGE.
Clonality	Monoclonal
Isotype	IgG
Applications	IF, WB
Target	Histone macroH2A1, mH2A1, H2A/y, MACROH2A1, Medulloblastoma antigen MU-MB-50.205, Core histone macro-H2A.1, H2AFY, Histone H2A.y
Purification	Protein A/G purified from cell culture supernatant.
Endotoxin level	Please contact with the lab for this information.
Accession	O75367
Stability and Storage	Use a manual defrost freezer and avoid repeated freeze thaw cycles. Store at 4 °C for frequent use. Store at -20 °C for twelve months from the date of receipt.

Note

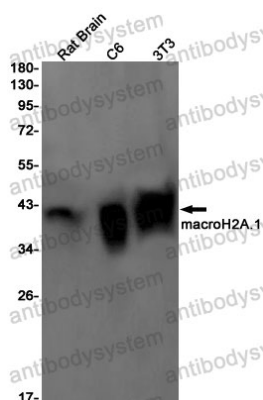
For research use only.

Data Image



Immunofluorescence

Immunocytochemistry analysis of macroH2A.1(green) in Hela using macroH2A.1 antibody, and DAPI(blue)



Western blot

Western blot analysis of macroH2A.1 in rat Brain, C6, 3T3 lysates using Macro H2A.1 antibody.