

# Anti-DEGS1 Antibody (R1D55)

## Summary

---

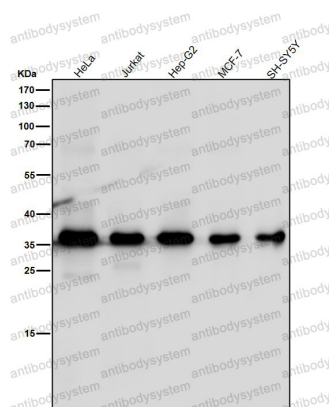
<b>Catalog No.</b>	RHA42202
<b>Clone ID</b>	R1D55
<b>Host species</b>	Rabbit
<b>Tested applications</b>	WB: 1:1000-1:2000
<b>Species reactivity</b>	Human
<b>Form</b>	Liquid
<b>Storage buffer</b>	0.01M PBS, pH 7.4, 0.05% BSA, 50% Glycerol, 0.05% Sodium azide.
<b>Concentration</b>	1 mg/ml
<b>Purity</b>	>95% by SDS-PAGE.
<b>Clonality</b>	Monoclonal
<b>Isotype</b>	IgG
<b>Applications</b>	WB
<b>Target</b>	Sphingolipid delta(4)-desaturase DES1, DEGS1, DES1, Dihydroceramide desaturase-1, Membrane lipid desaturase, Degenerative spermatocyte homolog 1, Cell migration-inducing gene 15 protein, MLD
<b>Purification</b>	Protein A/G purified from cell culture supernatant.
<b>Endotoxin level</b>	Please contact with the lab for this information.
<b>Accession</b>	O15121

**Stability and Storage**

Use a manual defrost freezer and avoid repeated freeze thaw cycles. Store at 4 °C for frequent use. Store at -20 °C for twelve months from the date of receipt.

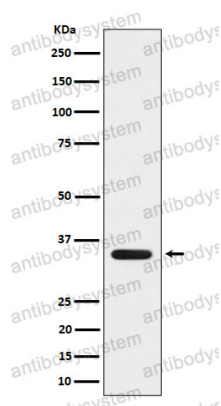
**Note**

For research use only.

**Data Image**

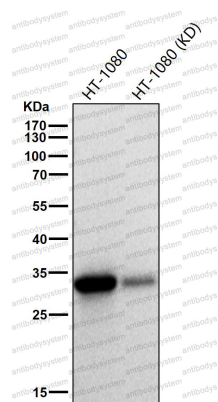
Western blot

All lanes use the Antibody at 1:2K dilution for 1 hour at room temperature.



Western blot

Western blot analysis of MLD expression in 293 cell lysate.



Western blot

All lanes use the Antibody at 1:1K dilution for 1 hour at room temperature.