

# Anti-Phospho-DVL2 (Ser143) Antibody (R1D21)

## Summary

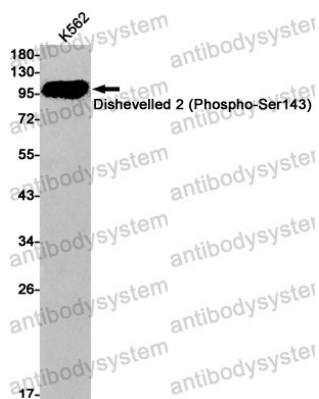
---

<b>Catalog No.</b>	RHA25401
<b>Clone ID</b>	R1D21
<b>Host species</b>	Rabbit
<b>Tested applications</b>	WB: 1:500-1:1000
<b>Species reactivity</b>	Human, Mouse
<b>Form</b>	Liquid
<b>Storage buffer</b>	TBS, 0.05% BSA, 50% Glycerol, 0.05% Sodium azide.
<b>Concentration</b>	1 mg/ml
<b>Purity</b>	>95% by SDS-PAGE.
<b>Clonality</b>	Monoclonal
<b>Isotype</b>	IgG
<b>Applications</b>	WB
<b>Target</b>	Dishevelled-2, DVL2, DSH homolog 2, Segment polarity protein dishevelled homolog DVL-2
<b>Purification</b>	Protein A/G purified from cell culture supernatant.
<b>Endotoxin level</b>	Please contact with the lab for this information.
<b>Accession</b>	O14641
<b>Stability and Storage</b>	Use a manual defrost freezer and avoid repeated freeze thaw cycles. Store at 4 °C for frequent use. Store at -20 °C for twelve months from the date of receipt.

## Note

For research use only.

## Data Image



Western blot

Western blot analysis of Dishevelled 2 (Phospho-Ser143) in K562 lysates using Phospho-Dishevelled 2 (Ser143) antibody.