

Anti-DPYSL4 Antibody (R1D16)

Summary

Catalog No.	RHA21702
Clone ID	R1D16
Host species	Rabbit
Tested applications	WB: 1:1000-1:2000
Species reactivity	Human, Mouse, Rat
Form	Liquid
Storage buffer	0.01M PBS, pH 7.4, 0.05% BSA, 50% Glycerol, 0.05% Sodium azide.
Concentration	1 mg/ml
Purity	>95% by SDS-PAGE.
Clonality	Monoclonal
Isotype	IgG
Applications	WB
Target	Collapsin response mediator protein 3, DRP-4, ULIP-4, Dihydropyrimidinase-related protein 4, CRMP3, ULIP4, DPYSL4, UNC33- like phosphoprotein 4, CRMP-3
Purification	Protein A/G purified from cell culture supernatant.
Endotoxin level	Please contact with the lab for this information.
Accession	O14531

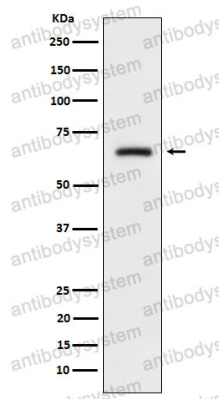
Stability and Storage

Use a manual defrost freezer and avoid repeated freeze thaw cycles. Store at 4 °C for frequent use. Store at -20 °C for twelve months from the date of receipt.

Note

For research use only.

Data Image



Western blot

Western blot analysis of CRMP3 expression in SH-SY5Y cell lysate.