

Anti-SOCS2 Antibody (R1D13)

Summary

Catalog No.	RHA20201
Clone ID	R1D13
Host species	Rabbit
Tested applications	IP: 1:20, WB: 1:500-1:1000
Species reactivity	Human
Form	Liquid
Storage buffer	0.01M PBS, pH 7.4, 0.05% BSA, 50% Glycerol, 0.05% Sodium azide.
Concentration	1 mg/ml
Purity	>95% by SDS-PAGE.
Clonality	Monoclonal
Isotype	IgG
Applications	IP, WB
Target	CIS-2, STAT-induced STAT inhibitor 2, SSI-2, SOCS2, STAT2, CIS2, Cytokine-inducible SH2 protein 2, SSI2, Suppressor of cytokine signaling 2, SOCS-2
Purification	Protein A/G purified from cell culture supernatant.
Endotoxin level	Please contact with the lab for this information.
Accession	O14508

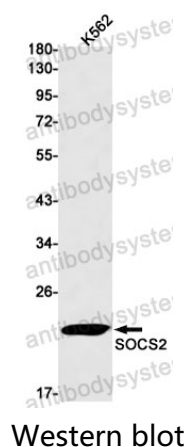
Stability and Storage

Use a manual defrost freezer and avoid repeated freeze thaw cycles. Store at 4 °C for frequent use. Store at -20 °C for twelve months from the date of receipt.

Note

For research use only.

Data Image



Western blot analysis of SOCS2 in K562 lysates using SOCS2 antibody.