

Anti-CLIC1 Antibody (R1C81)

Summary

Catalog No.	RHA08501
Clone ID	R1C81
Host species	Rabbit
Tested applications	IF: 1:50-1:200, IP: 1:20, WB: 1:500-1:1000
Species reactivity	Human, Mouse, Rat, Hamster
Form	Liquid
Storage buffer	0.01M PBS, pH 7.4, 0.05% BSA, 50% Glycerol, 0.05% Sodium azide.
Concentration	1 mg/ml
Purity	>95% by SDS-PAGE.
Clonality	Monoclonal
Isotype	IgG
Applications	IF, IP, WB
Target	Regulatory nuclear chloride ion channel protein, CLIC1, NCC27, Nuclear chloride ion channel 27, Chloride channel ABP, Chloride intracellular channel protein 1, hRNCC, G6
Purification	Protein A/G purified from cell culture supernatant.
Endotoxin level	Please contact with the lab for this information.
Accession	O00299

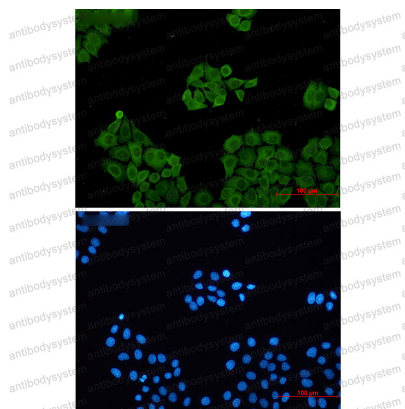
Stability and Storage

Use a manual defrost freezer and avoid repeated freeze thaw cycles. Store at 4 °C for frequent use. Store at -20 °C for twelve months from the date of receipt.

Note

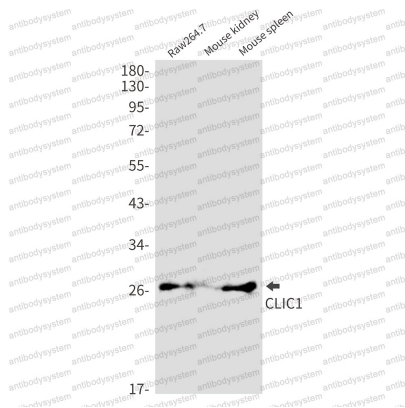
For research use only.

Data Image



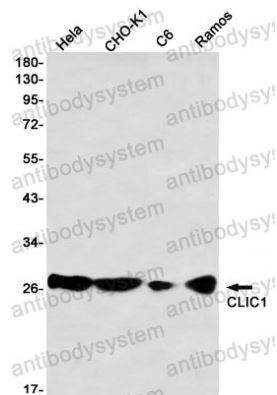
Immunofluorescence

Immunocytochemistry analysis of CLIC1 (green) in Hela using CLIC1 antibody, and DAPI (blue).



Western blot

Western blot analysis of CLIC1 in Raw264.7, mouse kidney, mouse spleen lysates using CLIC1 antibody.



Western blot

Western blot analysis of CLIC1 in HeLa, CHO-K1, C6, Ramos lysates using CLIC1 antibody