

Anti-LEFTY1/2 Antibody (R1C80)

Summary

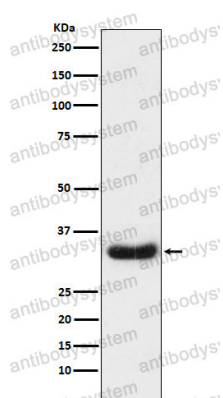
Catalog No.	RHA08201
Clone ID	R1C80
Host species	Rabbit
Tested applications	IP: 1:20-1:50, WB: 1:1000-1:2000
Species reactivity	Human, Mouse, Rat
Form	Liquid
Storage buffer	0.01M PBS, pH 7.4, 0.05% BSA, 50% Glycerol, 0.05% Sodium azide.
Concentration	1 mg/ml
Purity	>95% by SDS-PAGE.
Clonality	Monoclonal
Isotype	IgG
Applications	IP, WB
Target	EBAF, LEFTA, Left-right determination factor A, Transforming growth factor beta-4, Endometrial bleeding-associated factor, Protein lefty-2, TGF-beta-4, LEFTY2, Left-right determination factor 2, TGFB4, LEFTYA, Protein lefty-A
Purification	Protein A/G purified from cell culture supernatant.
Endotoxin level	Please contact with the lab for this information.
Accession	O00292

Stability and Storage

Use a manual defrost freezer and avoid repeated freeze thaw cycles. Store at 4 °C for frequent use. Store at -20 °C for twelve months from the date of receipt.

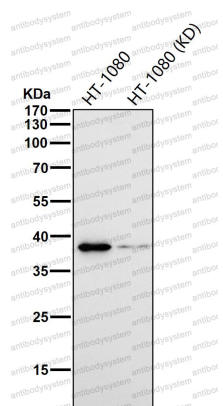
Note

For research use only.

Data Image

Western blot

Western blot analysis of LEFTY1 + LEFTY2 expression in Caco2 cell lysate.



Western blot

All lanes use the Antibody at 1:1k dilution for 1 hour at room temperature.