

Anti-CBX4 Antibody (R1C74)

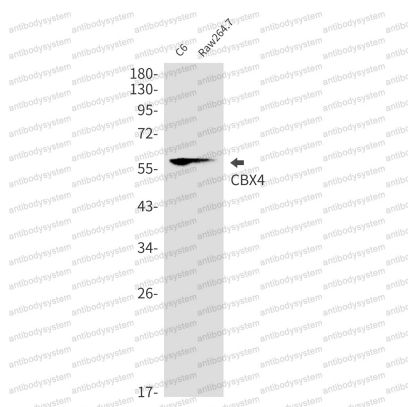
Summary

Catalog No.	RHA07303
Clone ID	R1C74
Host species	Rabbit
Tested applications	WB: 1:500-1:1000
Species reactivity	Human, Mouse, Rat
Form	Liquid
Storage buffer	0.01M PBS, pH 7.4, 0.05% BSA, 50% Glycerol, 0.05% Sodium azide.
Concentration	1 mg/ml
Purity	>95% by SDS-PAGE.
Clonality	Monoclonal
Isotype	IgG
Applications	WB
Target	Polycomb 2 homolog, hPc2, Pc2, CBX4, E3 SUMO-protein ligase CBX4, Chromobox protein homolog 4
Purification	Protein A/G purified from cell culture supernatant.
Endotoxin level	Please contact with the lab for this information.
Accession	O00257
Stability and Storage	Use a manual defrost freezer and avoid repeated freeze thaw cycles. Store at 4 °C for frequent use. Store at -20 °C for twelve months from the date of receipt.

Note

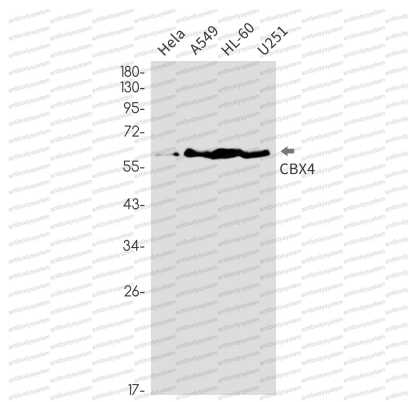
For research use only.

Data Image



Western blot

Western blot analysis of CBX4 in C6, Raw264.7 lysates using CBX4 antibody.



Western blot

Western blot analysis of CBX4 in HeLa, A549, HL-60, U251 lysates using CBX4 antibody.