

Anti-NFKBIE Antibody (R1C72)

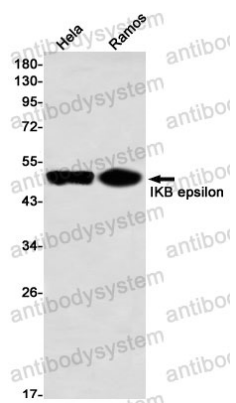
Summary

Catalog No.	RHA06001
Clone ID	R1C72
Host species	Rabbit
Tested applications	IP: 1:20, WB: 1:500-1:1000
Species reactivity	Human
Form	Liquid
Storage buffer	0.01M PBS, pH 7.4, 0.05% BSA, 50% Glycerol, 0.05% Sodium azide.
Concentration	1 mg/ml
Purity	>95% by SDS-PAGE.
Clonality	Monoclonal
Isotype	IgG
Applications	IP, WB
Target	IkB-E, IKBE, IkappaBepsilon, I-kappa-B-epsilon, IkB-epsilon, NFKBIE, NF-kappa-B inhibitor epsilon, NF-kappa-BIE
Purification	Protein A/G purified from cell culture supernatant.
Endotoxin level	Please contact with the lab for this information.
Accession	O00221
Stability and Storage	Use a manual defrost freezer and avoid repeated freeze thaw cycles. Store at 4 °C for frequent use. Store at -20 °C for twelve months from the date of receipt.

Note

For research use only.

Data Image



Western blot

Western blot analysis of IKB epsilon in HeLa, Ramos lysates using IKB epsilon antibody.