

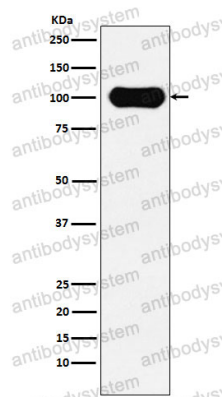
Anti-APBB1 Antibody (R1C67)

Summary

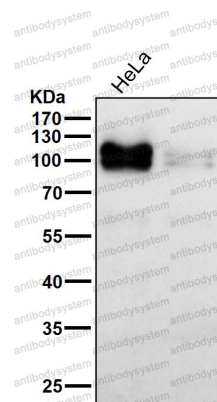
| | |
|------------------------------|---|
| Catalog No. | RHA05502 |
| Clone ID | R1C67 |
| Host species | Rabbit |
| Tested applications | IF: 1:50-1:200, IHC: 1:100-1:200, WB: 1:1000-1:2000 |
| Species reactivity | Human |
| Form | Liquid |
| Storage buffer | 0.01M PBS, pH 7.4, 0.05% BSA, 50% Glycerol, 0.05% Sodium azide. |
| Concentration | 1 mg/ml |
| Purity | >95% by SDS-PAGE. |
| Clonality | Monoclonal |
| Isotype | IgG |
| Applications | IF, IHC, WB |
| Target | APBB1, Amyloid-beta A4 precursor protein-binding family B member 1, Protein Fe65, RIR, FE65 |
| Purification | Protein A/G purified from cell culture supernatant. |
| Endotoxin level | Please contact with the lab for this information. |
| Accession | O00213 |
| Stability and Storage | Use a manual defrost freezer and avoid repeated freeze thaw cycles. Store at 4 °C for frequent use. Store at -20 °C for twelve months from the date of receipt. |

Note

For research use only.

Data Image**Western blot**

Western blot analysis of FE65 expression in SH-SY5Y cell lysate.

**Western blot**

All lanes use the Antibody at 1:1K dilution for 1 hour at room temperature.