

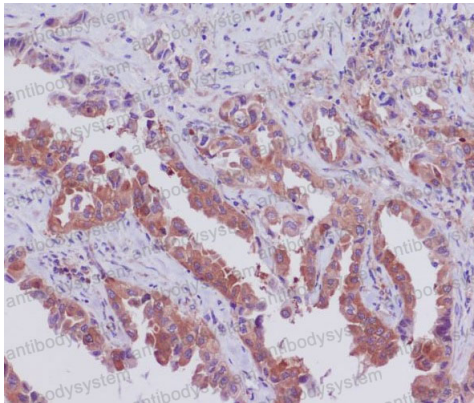
Anti-SGK1 Antibody (R1C59)

Summary

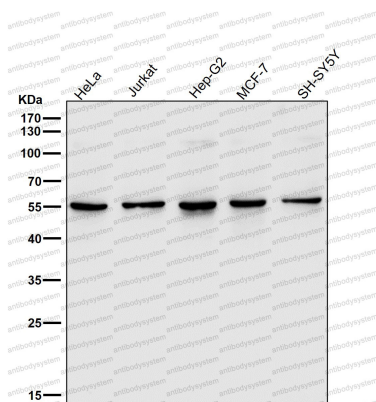
Catalog No.	RHA02603
Clone ID	R1C59
Host species	Rabbit
Tested applications	FCM: 1:20-1:100, IHC: 1:100-1:200, IP: 1:20-1:50, WB: 1:1000-1:2000
Species reactivity	Human, Mouse, Rat
Form	Liquid
Storage buffer	0.01M PBS, pH 7.4, 0.05% BSA, 50% Glycerol, 0.05% Sodium azide.
Concentration	1 mg/ml
Purity	>95% by SDS-PAGE.
Clonality	Monoclonal
Isotype	IgG
Applications	FCM, IHC, IP, WB
Target	SGK, Serine/threonine-protein kinase Sgk1, Serum/glucocorticoid-regulated kinase 1, SGK1
Purification	Protein A/G purified from cell culture supernatant.
Endotoxin level	Please contact with the lab for this information.
Accession	O00141
Stability and Storage	Use a manual defrost freezer and avoid repeated freeze thaw cycles. Store at 4 °C for frequent use. Store at -20 °C for twelve months from the date of receipt.

Note

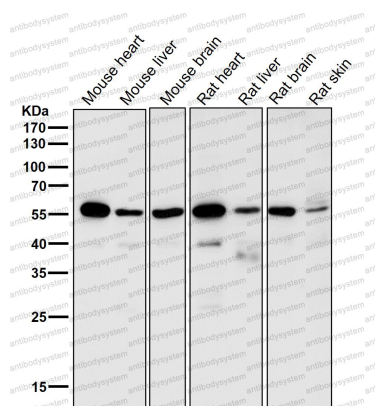
For research use only.

Data Image**Immunohistochemical**

Immunohistochemical analysis of paraffin-embedded human lung cancer, using SGK1 Antibody.

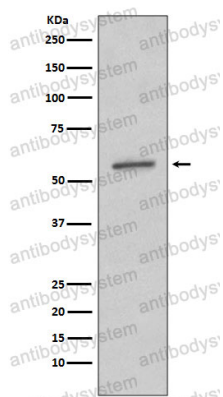
**Western blot**

All lanes use the Antibody at 1:1K dilution for 1 hour at room temperature.



Western blot

All lanes use the Antibody at 1:1K dilution for 1 hour at room temperature.



Western blot

Western blot analysis of SGK1 expression in A431 cell lysate.