

Anti-KRAS/HRAS/NRAS Antibody (R1C43)

Summary

Catalog No.	RHB90902
Clone ID	R1C43
Host species	Rabbit
Tested applications	FCM: 1:20-1:100, IF: 1:50-1:200, IP: 1:20-1:50, WB: 1:1000-1:2000
Species reactivity	Human, Mouse, Rat
Form	Liquid
Storage buffer	0.01M PBS, pH 7.4, 0.05% BSA, 50% Glycerol, 0.05% Sodium azide.
Concentration	1 mg/ml
Purity	>95% by SDS-PAGE.
Clonality	Monoclonal
Isotype	IgG
Applications	FCM, IF, IP, WB
Target	GTPase NRas, Transforming protein N-Ras, NRAS, HRAS1, GTPase HRas, H-Ras-1, Ha-Ras, Transforming protein p21, c-H-ras, p21ras, HRAS, HRAS1, GTPase KRas, K-Ras 2, Ki-Ras, c-K-ras, c-Ki-ras, KRAS, KRAS2, RASK2, Ras
Purification	Protein A/G purified from cell culture supernatant.
Endotoxin level	Please contact with the lab for this information.
Accession	P01111, P01112, P01116

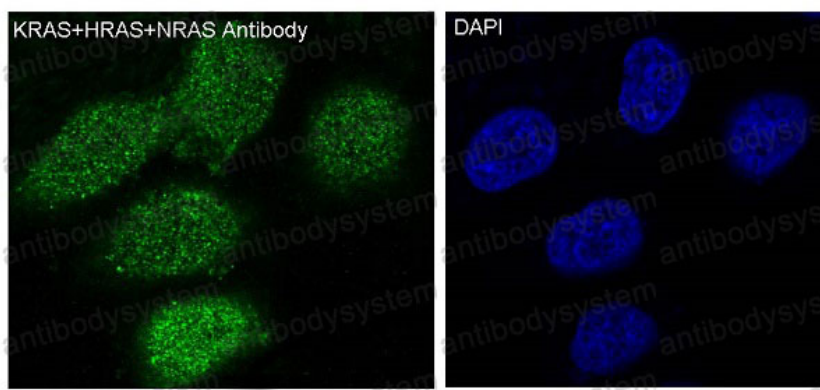
Stability and Storage

Use a manual defrost freezer and avoid repeated freeze-thaw cycles.

Store at +4 °C short term (1-2 weeks). Store at -20 °C 12 months. Store at -80 °C long term.

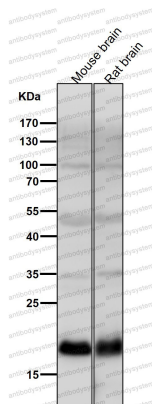
Note

For research use only.

Data Image

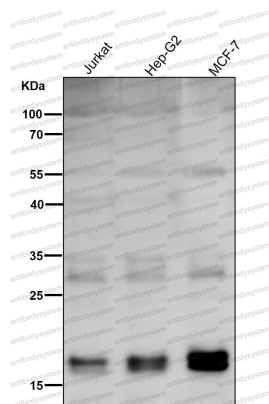
Immunofluorescent analysis of HeLa cells, using KRAS+HRAS+NRAS Antibody.

Immunofluorescence



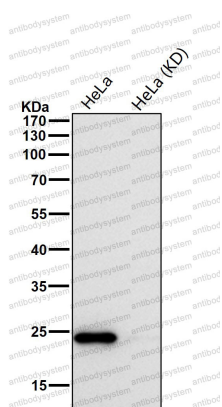
Western blot

All lanes use the Antibody at 1:1K dilution for 1 hour at room temperature.



Western blot

All lanes use the Antibody at 1:1K dilution for 1 hour at room temperature.



Western blot

All lanes use the Antibody at 1:1K dilution for 1 hour at room temperature.