

Anti-FBL Antibody (R1C30)

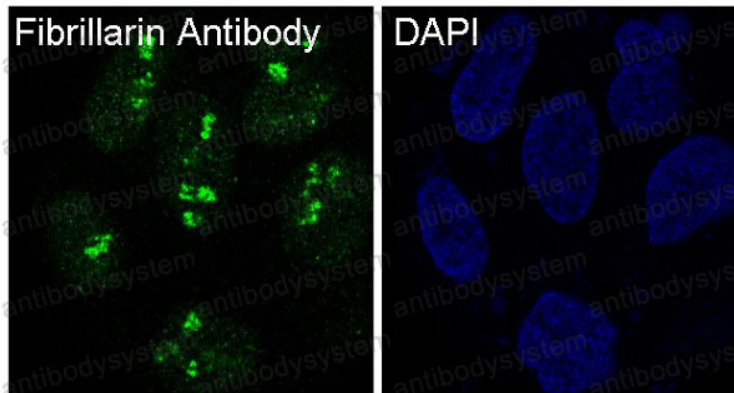
Summary

Catalog No.	RHD50101
Clone ID	R1C30
Host species	Rabbit
Tested applications	FCM: 1:20-1:100, IF: 1:50-1:200, IHC: 1:100-1:200, IP: 1:20-1:50, WB: 1:1000-1:2000
Species reactivity	Human, Mouse, Rat
Form	Liquid
Storage buffer	0.01M PBS, pH 7.4, 0.05% BSA, 50% Glycerol, 0.05% Sodium azide.
Concentration	1 mg/ml
Purity	>95% by SDS-PAGE.
Clonality	Monoclonal
Isotype	IgG
Applications	FCM, IF, IHC, IP, WB
Target	FBL, FIB, FLRN, RNU3IP1, FBL
Purification	Protein A/G purified from cell culture supernatant.
Endotoxin level	Please contact with the lab for this information.
Accession	P22087
Stability and Storage	Use a manual defrost freezer and avoid repeated freeze-thaw cycles. Store at +4 °C short term (1-2 weeks). Store at -20 °C 12 months. Store at -80 °C long term.

Note

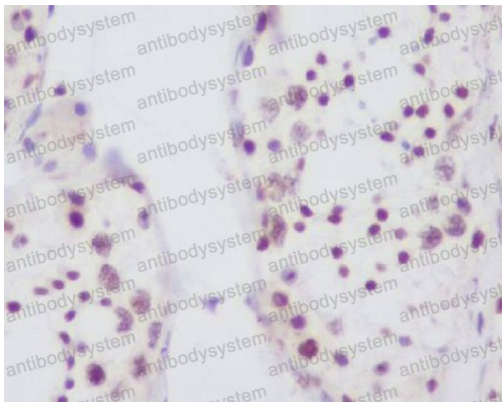
For research use only.

Data Image



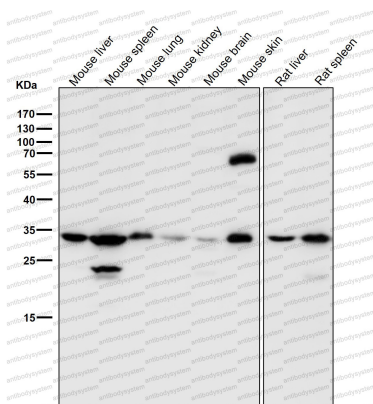
Immunofluorescent analysis of HeLa cells, using Fibrillarin Antibody .

Immunofluorescence



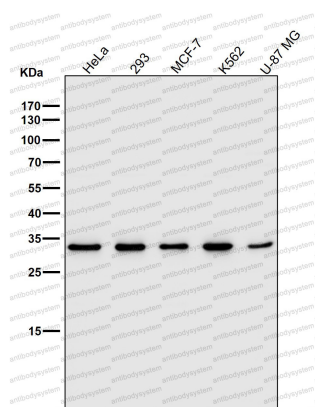
Immunohistochemical analysis of paraffin-embedded human testis, using Fibrillarin Antibody.

Immunohistochemical



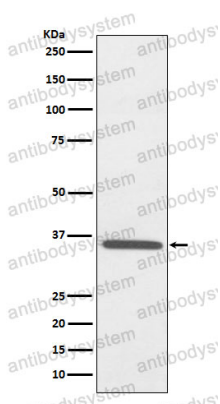
Western blot

All lanes use the Antibody at 1:2K dilution for 1 hour at room temperature.



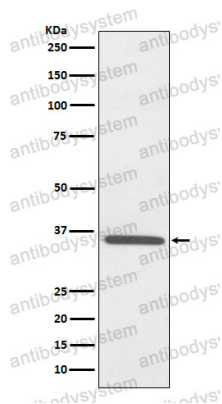
Western blot

All lanes use the Antibody at 1:2K dilution for 1 hour at room temperature.



Western blot

Western blot analysis of Fibrillarin expression in HepG2 cell lysate.



Western blot

Western blot analysis of Fibrillarin expression in HepG2 cell lysate.