

Anti-CASP2 Antibody (R1C17)

Summary

Catalog No.	RME36001
Clone ID	R1C17
Host species	Rabbit
Tested applications	FCM: 1:20-1:100, IF: 1:50-1:200, IHC: 1:100-1:200, WB: 1:1000-1:2000
Species reactivity	Human, Mouse, Rat
Form	Liquid
Storage buffer	0.01M PBS, pH 7.4, 0.05% BSA, 50% Glycerol, 0.05% Sodium azide.
Concentration	1 mg/ml
Purity	>95% by SDS-PAGE.
Clonality	Monoclonal
Isotype	IgG
Applications	FCM, IF, IHC, WB
Target	Caspase-2, Caspase 2, Caspase2, CASP-2, Neural precursor cell expressed developmentally down-regulated protein 2, NEDD-2, Protease ICH-1, CASP2, ICH1, NEDD2, Caspase 2
Purification	Protein A/G purified from cell culture supernatant.
Endotoxin level	Please contact with the lab for this information.
Accession	P29594

Stability and Storage

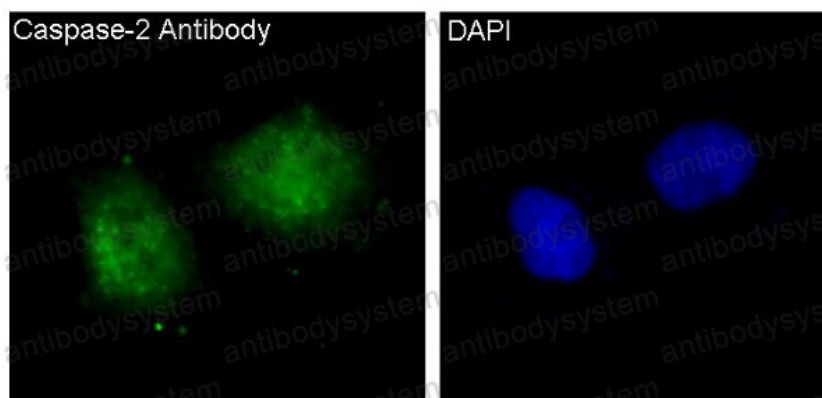
Use a manual defrost freezer and avoid repeated freeze-thaw cycles.

Store at +4 °C short term (1-2 weeks). Store at -20 °C 12 months. Store at -80 °C long term.

Note

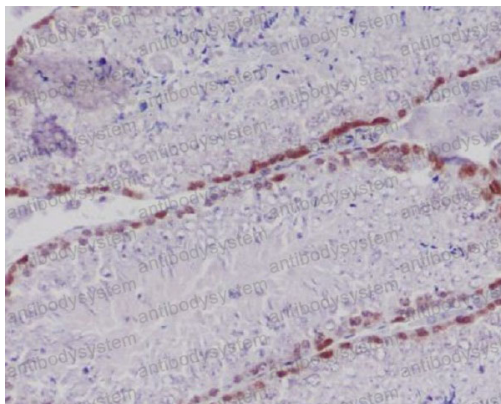
For research use only.

Data Image



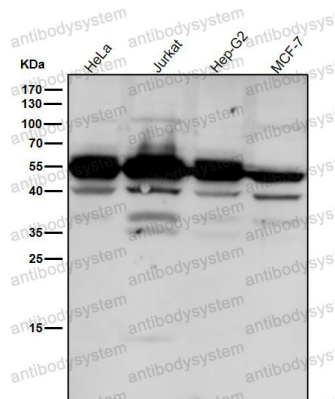
Immunofluorescent analysis of Hela cells, using Caspase-2 Antibody.

Immunofluorescence



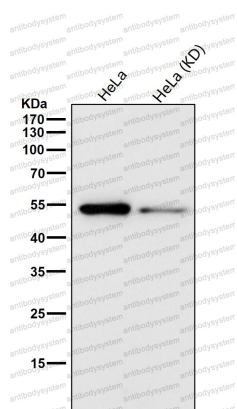
Immunohistochemical analysis of paraffin-embedded mouse testis, using Caspase-2 Antibody.

Immunohistochemical



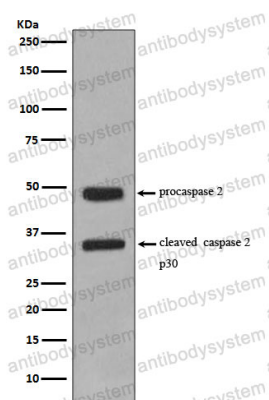
Western blot

All lanes use the Antibody at 1:2K dilution for 1 hour at room temperature.



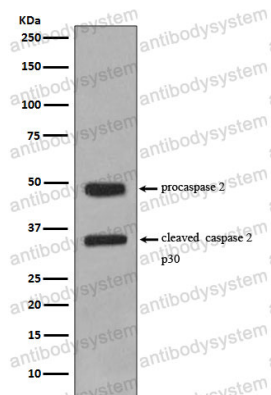
Western blot

All lanes use the Antibody at 1:1K dilution for 1 hour at room temperature.



Western blot

Western blot analysis of Caspase-2 expression in Jurkat cell lysate.



Western blot

Western blot analysis of Caspase-2 expression in Jurkat cell lysate.