

Anti-BBC3/PUMA Antibody (R1B94)

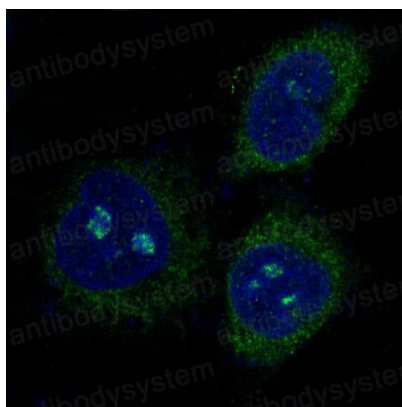
Summary

Catalog No.	RHK37101
Clone ID	R1B94
Host species	Rabbit
Tested applications	FCM: 1:20-1:100, IF: 1:50-1:200, IHC: 1:100-1:200, WB: 1:1000-1:2000
Species reactivity	Human, Mouse, Rat
Form	Liquid
Storage buffer	0.01M PBS, pH 7.4, 0.05% BSA, 50% Glycerol, 0.05% Sodium azide.
Concentration	1 mg/ml
Purity	>95% by SDS-PAGE.
Clonality	Monoclonal
Isotype	IgG
Applications	FCM, IF, IHC, WB
Target	BBC3, bcl2 binding component 3, jfy1, puma, p53 up-regulated modulator of apoptosis, PUMA alpha, BBC3
Purification	Protein A/G purified from cell culture supernatant.
Endotoxin level	Please contact with the lab for this information.
Accession	Q9BXH1
Stability and Storage	Use a manual defrost freezer and avoid repeated freeze-thaw cycles. Store at +4 °C short term (1-2 weeks). Store at -20 °C 12 months. Store at -80 °C long term.

Note

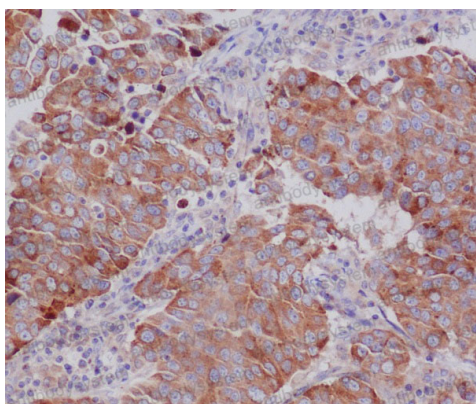
For research use only.

Data Image



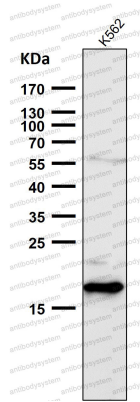
Immunofluorescence

Immunofluorescent analysis of HeLa cells, using PUMA Antibody .



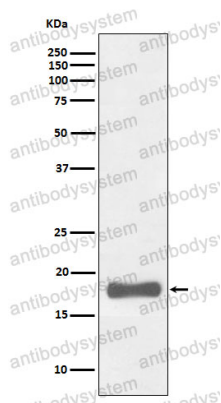
Immunohistochemical

Immunohistochemical analysis of paraffin-embedded human breast cancer, using PUMA Antibody.



Western blot

All lanes use the Antibody at 1:2K dilution for 1 hour at room temperature.



Western blot

Western blot analysis of PUMA expression in K562 cell lysate.