

Anti-BRD4 Antibody (R1B66)

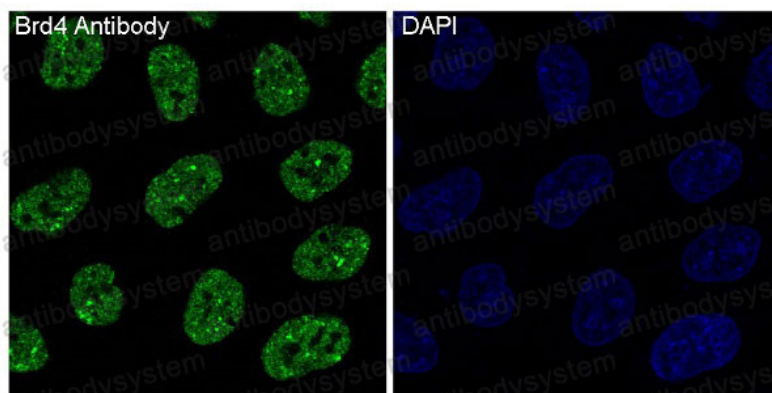
Summary

Catalog No.	RHB03303
Clone ID	R1B66
Host species	Rabbit
Tested applications	IF: 1:50-1:200, IHC: 1:100-1:200, IP: 1:20-1:50, WB: 1:1000-1:2000
Species reactivity	Human, Mouse, Rat
Form	Liquid
Storage buffer	0.01M PBS, pH 7.4, 0.05% BSA, 50% Glycerol, 0.05% Sodium azide.
Concentration	1 mg/ml
Purity	>95% by SDS-PAGE.
Clonality	Monoclonal
Isotype	IgG
Applications	IF, IHC, IP, WB
Target	Brd4, CAP, HUNK1, MCAP, Bromodomain containing 4, chromosome associated protein, BRD4
Purification	Protein A/G purified from cell culture supernatant.
Endotoxin level	Please contact with the lab for this information.
Accession	O60885
Stability and Storage	Use a manual defrost freezer and avoid repeated freeze-thaw cycles. Store at +4 °C short term (1-2 weeks). Store at -20 °C 12 months. Store at -80 °C long term.

Note

For research use only.

Data Image

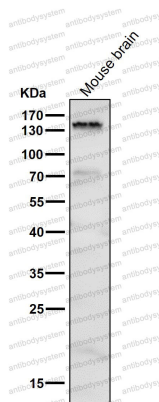


Immunofluorescent analysis of HeLa cells,
using Brd4 Antibody .

Immunofluorescence

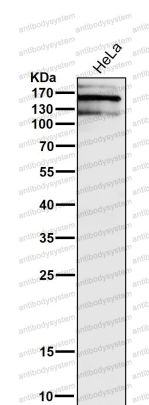
Immunohistochemical analysis of paraffin-
embedded human kidney, using Brd4
Antibody.

Immunohistochemical



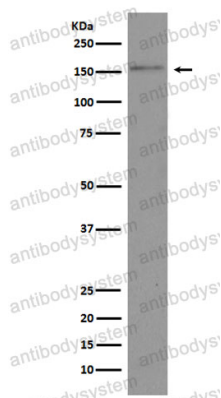
Western blot

All lanes use the Antibody at 1:1K dilution for 1 hour at room temperature.



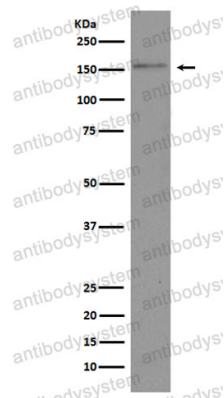
Western blot

All lanes use the Antibody at 1:1K dilution for 1 hour at room temperature.



Western blot

Western blot analysis of Brd4 expression in HeLa cell lysate.



Western blot

Western blot analysis of Brd4 expression in HeLa cell lysate.