

Anti-DUSP6 Antibody (R1B64)

Summary

Catalog No.	RHH38301
Clone ID	R1B64
Host species	Rabbit
Tested applications	FCM: 1:20-1:100, IF: 1:50-1:200, IHC: 1:100-1:200, IP: 1:20-1:50, WB: 1:1000-1:2000
Species reactivity	Human, Mouse, Rat
Form	Liquid
Storage buffer	0.01M PBS, pH 7.4, 0.05% BSA, 50% Glycerol, 0.05% Sodium azide.
Concentration	1 mg/ml
Purity	>95% by SDS-PAGE.
Clonality	Monoclonal
Isotype	IgG
Applications	FCM, IF, IHC, IP, WB
Target	HH19, MKP3, PYST1, DUSP6, DUSP6a, Dual specificity phosphatase 6, DUSP6
Purification	Protein A/G purified from cell culture supernatant.
Endotoxin level	Please contact with the lab for this information.
Accession	Q16828

Recombinant Proteins & Antibodies

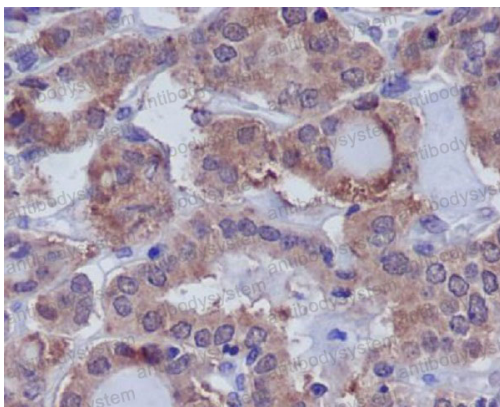
Stability and Storage

Use a manual defrost freezer and avoid repeated freeze-thaw cycles.

Store at +4 °C short term (1-2 weeks). Store at -20 °C 12 months. Store at -80 °C long term.

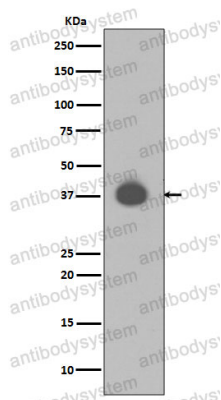
Note

For research use only.

Data Image

Immunohistochemical

Immunohistochemical analysis of paraffin-embedded human thyroid, using DUSP6 Antibody.



Western blot

Western blot analysis of DUSP6 expression in NIH/3T3 cell lysate.