

# Anti-TUBG1 Antibody (R1B59)

## Summary

---

<b>Catalog No.</b>	RHD56201
<b>Clone ID</b>	R1B59
<b>Host species</b>	Rabbit
<b>Tested applications</b>	FCM: 1:20-1:100, IF: 1:50-1:200, IHC: 1:100-1:200, IP: 1:20-1:50, WB: 1:1000-1:2000
<b>Species reactivity</b>	Human, Mouse, Rat, Chicken, Cow, Dog, Hamster, Monkey, Xenopus, Zebrafish
<b>Form</b>	Liquid
<b>Storage buffer</b>	0.01M PBS, pH 7.4, 0.05% BSA, 50% Glycerol, 0.05% Sodium azide.
<b>Concentration</b>	1 mg/ml
<b>Purity</b>	>95% by SDS-PAGE.
<b>Clonality</b>	Monoclonal
<b>Isotype</b>	IgG
<b>Applications</b>	FCM, IF, IHC, IP, WB
<b>Target</b>	Gamma-1-tubulin, Gamma-tubulin complex component 1, GCP-1, TBG1, TUBG, TUBG1, TUBGCP1, Tubulin gamma-1 chain, tubulin, gamma 1, tubulin, gamma polypeptide, gamma tubulin, gamma 1 Tubulin
<b>Purification</b>	Protein A/G purified from cell culture supernatant.
<b>Endotoxin level</b>	Please contact with the lab for this information.
<b>Accession</b>	P23258

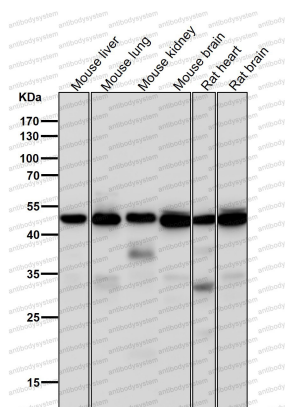
**Stability and Storage**

Use a manual defrost freezer and avoid repeated freeze-thaw cycles.

Store at +4 °C short term (1-2 weeks). Store at -20 °C 12 months. Store at -80 °C long term.

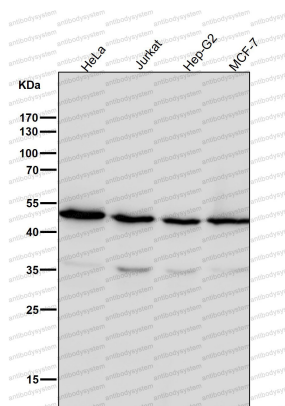
**Note**

For research use only.

**Data Image**

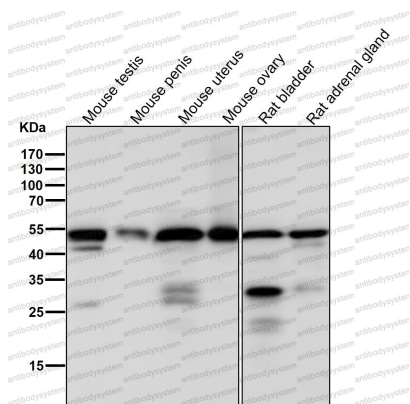
Western blot

All lanes use the Antibody at 1:2K dilution for 1 hour at room temperature.



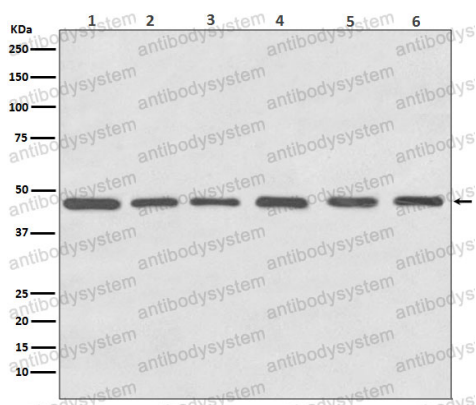
Western blot

All lanes use the Antibody at 1:2K dilution for 1 hour at room temperature.



Western blot

All lanes use the Antibody at 1:2K dilution for 1 hour at room temperature.



Western blot

Western blot analysis of Tubulin gamma expression in (1) HeLa cell lysate; (2) NIH 3T3 cell lysate; (3) C6 cell lysate; (4) Zebrafish lysates; (5) COS-1 cell lysate; (6) MDCK cell lysate.