

Anti-PRKCA Antibody (R1B40)

Summary

Catalog No.	RHD23201
Clone ID	R1B40
Host species	Rabbit
Tested applications	FCM: 1:20-1:100, IF: 1:50-1:200, IHC: 1:100-1:200, IP: 1:20-1:50, WB: 1:1000-1:2000
Species reactivity	Human, Mouse, Rat
Form	Liquid
Storage buffer	0.01M PBS, pH 7.4, 0.05% BSA, 50% Glycerol, 0.05% Sodium azide.
Concentration	1 mg/ml
Purity	>95% by SDS-PAGE.
Clonality	Monoclonal
Isotype	IgG
Applications	FCM, IF, IHC, IP, WB
Target	EC 2.7.11.13, KPCA, PKC III, PKC-A, PKC-III, PKC-alpha, PRKACA, PRKCA, Protein kinase C, alpha type, kinase PKC-alpha, PKC alpha
Purification	Protein A/G purified from cell culture supernatant.
Endotoxin level	Please contact with the lab for this information.
Accession	P17252

Stability and Storage

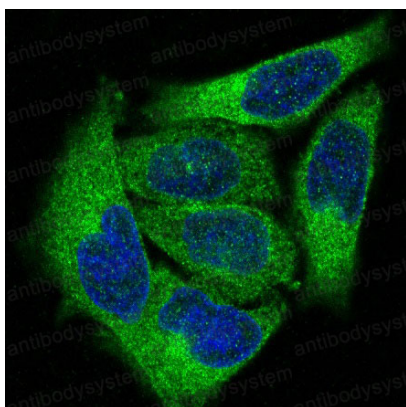
Use a manual defrost freezer and avoid repeated freeze-thaw cycles.

Store at +4 °C short term (1-2 weeks). Store at -20 °C 12 months. Store at -80 °C long term.

Note

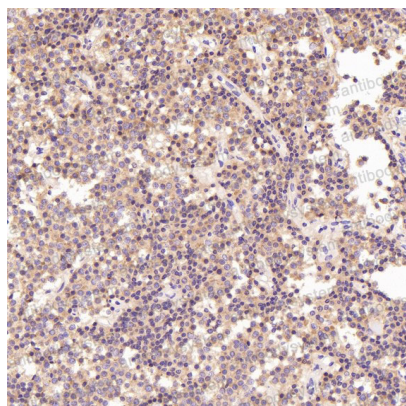
For research use only.

Data Image



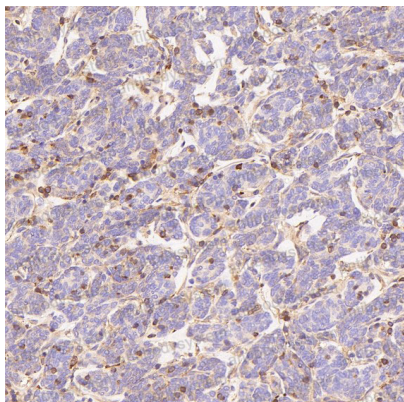
Immunofluorescence

Immunofluorescent analysis of HeLa cells, using PKC alpha Antibody .

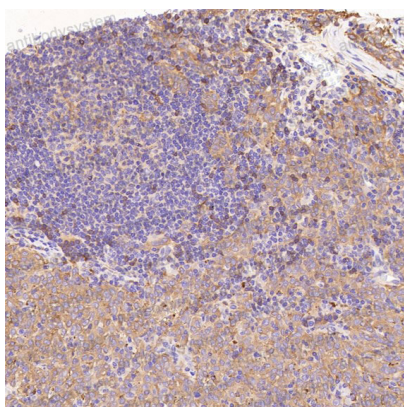


Immunohistochemical

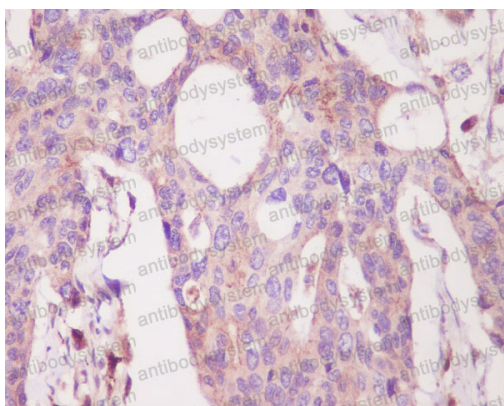
Immunohistochemical analysis of paraffin-embedded Human pituitary tumor, using the Antibody at 1:100 dilution.

**Immunohistochemical**

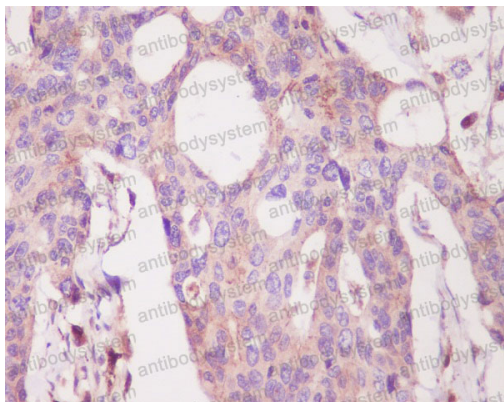
Immunohistochemical analysis of paraffin-embedded Human thymoma, using the Antibody at 1:200 dilution.

**Immunohistochemical**

Immunohistochemical analysis of paraffin-embedded Human melanoma, using the Antibody at 100 dilution.

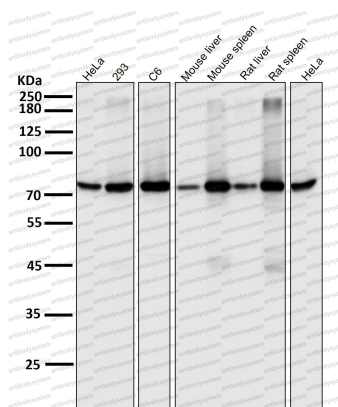
**Immunohistochemical**

Immunohistochemical analysis of paraffin-embedded human colon, using PKC alpha Antibody.



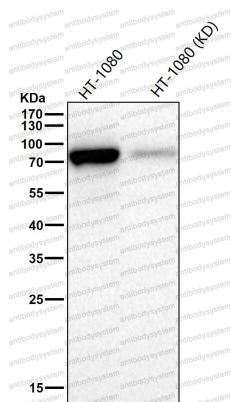
Immunohistochemical

Immunohistochemical analysis of paraffin-embedded human colon, using PKC alpha Antibody.



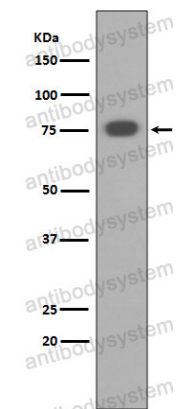
Western blot

All lanes use the Antibody at 1:2K dilution for 1 hour at room temperature.



Western blot

All lanes use the Antibody at 1:1K dilution for 1 hour at room temperature.



Western blot

Western blot analysis of PKC alpha expression in HEK293 cell lysate.