

Anti-Calreticulin/CALR Antibody (R1B38)

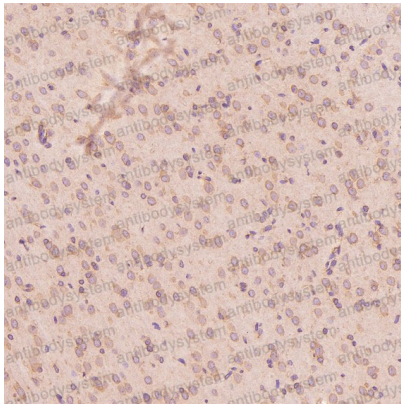
Summary

Catalog No.	RHD75201
Clone ID	R1B38
Host species	Rabbit
Tested applications	FCM: 1:20-1:100, IF: 1:50-1:200, IHC: 1:100-1:200, IP: 1:20-1:50, WB: 1:1000-1:2000
Species reactivity	Human, Mouse, Rat
Form	Liquid
Storage buffer	0.01M PBS, pH 7.4, 0.05% BSA, 50% Glycerol, 0.02% Sodium azide.
Concentration	1 mg/ml
Purity	>95% by SDS-PAGE.
Clonality	Monoclonal
Isotype	IgG
Applications	FCM, IF, IHC, IP, WB
Target	CALR, CRT, FLJ26680, RO, SSA, cC1Qr, CRP55, CRTC, HACBP, Calreticulin
Purification	Protein A/G purified from cell culture supernatant.
Endotoxin level	Please contact with the lab for this information.
Accession	P27797
Stability and Storage	Use a manual defrost freezer and avoid repeated freeze-thaw cycles. Store at +4 °C short term (1-2 weeks). Store at -20 °C 12 months. Store at -80 °C long term.

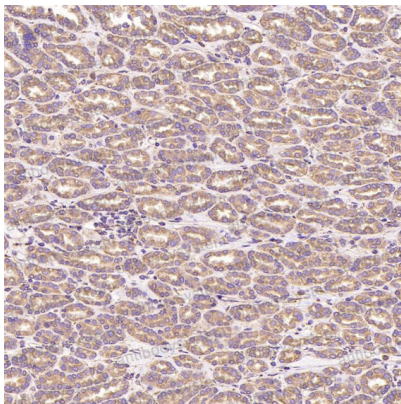
Note

For research use only.

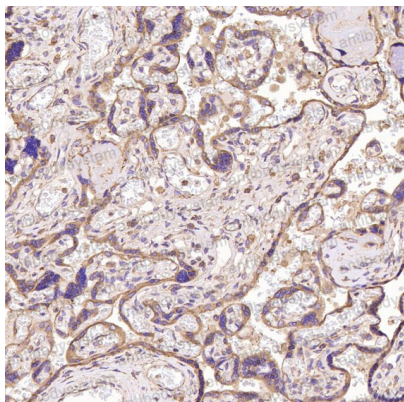
Data Image

**Immunohistochemical**

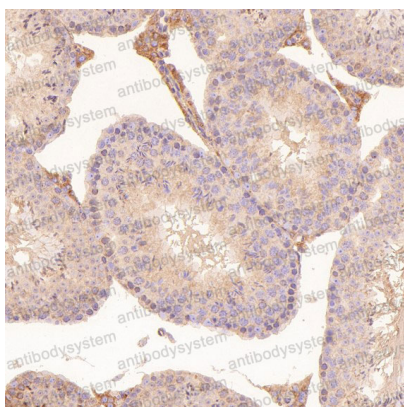
Immunohistochemical analysis of paraffin-embedded Rat cerebral cortex, using the Antibody at 1:150 dilution.

**Immunohistochemical**

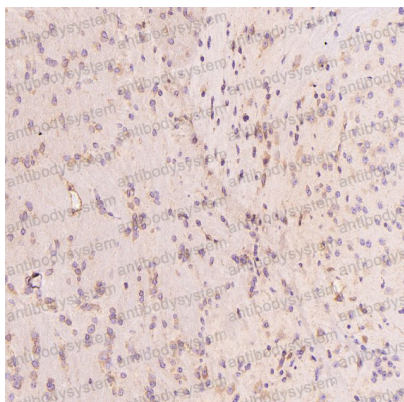
Immunohistochemical analysis of paraffin-embedded Human renal cancer, using the Antibody at 1:150 dilution.

**Immunohistochemical**

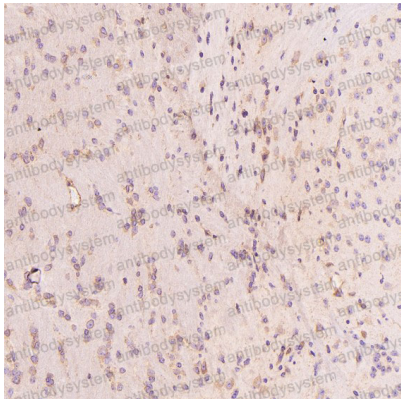
Immunohistochemical analysis of paraffin-embedded Human placenta, using the Antibody at 1:150 dilution.

**Immunohistochemical**

Immunohistochemical analysis of paraffin-embedded Mouse testis, using the Antibody at 1:150 dilution.

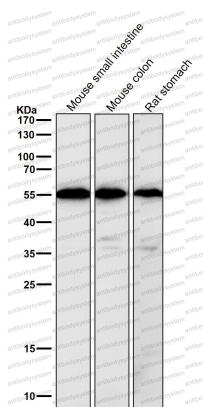
**Immunohistochemical**

Immunohistochemical analysis of paraffin-embedded Mouse cerebellum, using the Antibody at 1:150 dilution.



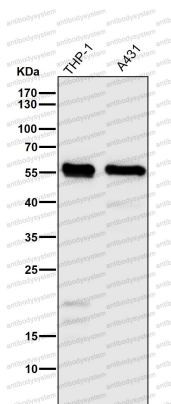
Immunohistochemical

Immunohistochemical analysis of paraffin-embedded Mouse cerebellum, using the Antibody at 1:150 dilution.



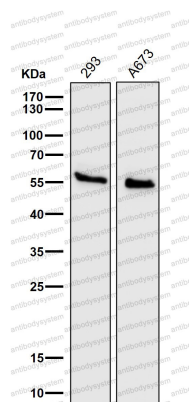
Western blot

All lanes use the Antibody at 1:2K dilution for 1 hour at room temperature.



Western blot

All lanes use the Antibody at 1:2K dilution for 1 hour at room temperature.

**Western blot**

All lanes use the Antibody at 1:2K dilution for 1 hour at room temperature.