

Anti-Phospho-PAK1/2/3 (S144 + S141 + S139) Antibody (R1B37)

Summary

Catalog No.	RHG42401
Clone ID	R1B37
Host species	Rabbit
Tested applications	FCM: 1:20-1:100, IF: 1:50-1:200, IHC: 1:100-1:200, IP: 1:20-1:50, WB: 1:1000-1:5000
Species reactivity	Human, Mouse, Rat
Form	Liquid
Storage buffer	0.01M PBS, pH 7.4, 0.05% BSA, 50% Glycerol, 0.05% Sodium azide.
Concentration	1 mg/ml
Purity	>95% by SDS-PAGE.
Clonality	Monoclonal
Isotype	IgG
Applications	FCM, IF, IHC, IP, WB
Target	ADRB2, Alpha-PAK, CDC42/RAC effector kinase PAK-A, EC 2.7.11.1, P65-PAK, P68-PAK, PAK1 (phospho S144), PAK2 (phospho S141), PAK3 (phospho S139),, p-PAK1/2/3 (S144/S141/S154)
Purification	Protein A/G purified from cell culture supernatant.
Endotoxin level	Please contact with the lab for this information.
Accession	Q13153, Q13177, O75914

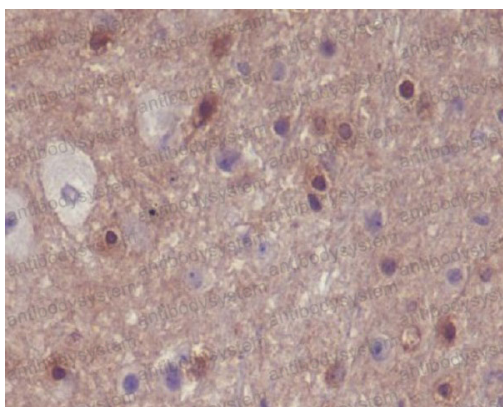
Stability and Storage

Use a manual defrost freezer and avoid repeated freeze-thaw cycles.

Store at +4 °C short term (1-2 weeks). Store at -20 °C 12 months. Store at -80 °C long term.

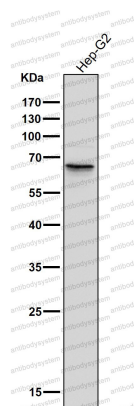
Note

For research use only.

Data Image

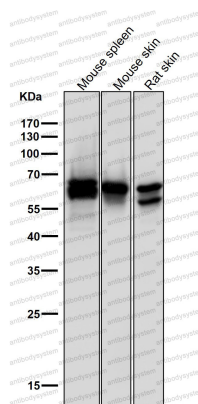
Immunohistochemical

Immunohistochemical analysis of paraffin-embedded mouse brain, using Phospho-PAK1/2/3 (S144/S141/S154) Antibody.



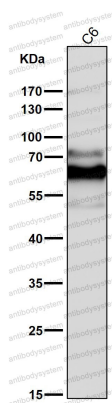
Western blot

All lanes use the Antibody at 1:3K dilution for 1 hour at room temperature.



Western blot

All lanes use the Antibody at 1:3K dilution for 1 hour at room temperature.



Western blot

All lanes use the Antibody at 1:3K dilution for 1 hour at room temperature.