

Anti-BIM/BCL2L11 Antibody (R1B25)

Summary

Catalog No.	RHA69701
Clone ID	R1B25
Host species	Rabbit
Tested applications	FCM: 1:20-1:100, IF: 1:50-1:200, IHC: 1:100-1:200, IP: 1:20-1:50, WB: 1:1000-1:2000
Species reactivity	Human, Mouse, Rat
Form	Liquid
Storage buffer	0.01M PBS, pH 7.4, 0.05% BSA, 50% Glycerol, 0.05% Sodium azide.
Concentration	1 mg/ml
Purity	>95% by SDS-PAGE.
Clonality	Monoclonal
Isotype	IgG
Applications	FCM, IF, IHC, IP, WB
Target	BAM, BIM, BOD, BimL, BimS, BimEL, BIM-beta6, BIM-beta7, BIM-alpha6, BCL2L11, BIM
Purification	Protein A/G purified from cell culture supernatant.
Endotoxin level	Please contact with the lab for this information.
Accession	O43521

Stability and Storage

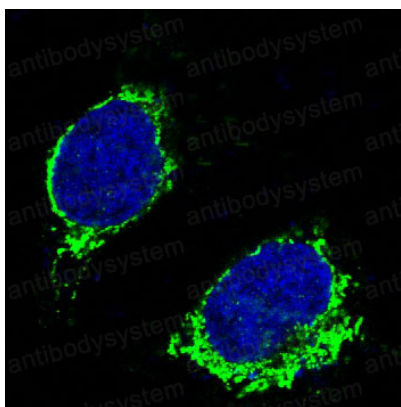
Use a manual defrost freezer and avoid repeated freeze-thaw cycles.

Store at +4 °C short term (1-2 weeks). Store at -20 °C 12 months. Store at -80 °C long term.

Note

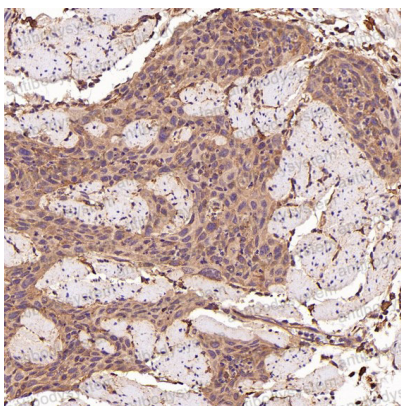
For research use only.

Data Image



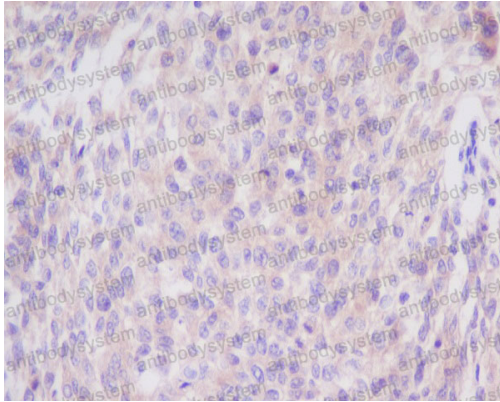
Immunofluorescence

Immunofluorescent analysis of Raji cells, using Bim Antibody.



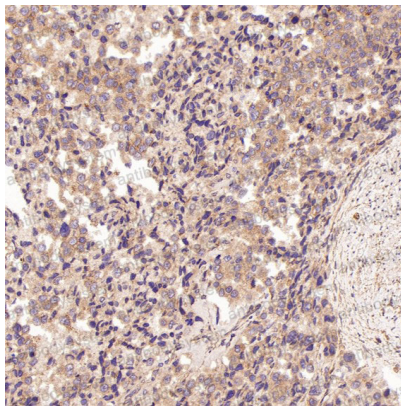
Immunohistochemical

Immunohistochemical analysis of paraffin-embedded Human esophageal carcinoma, using the Antibody at 1:100 dilution.



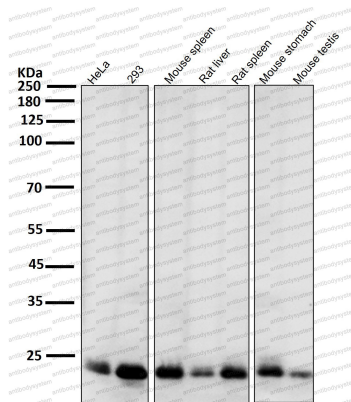
Immunohistochemical

Immunohistochemical analysis of paraffin-embedded human cervix cancer, using Bim Antibody.



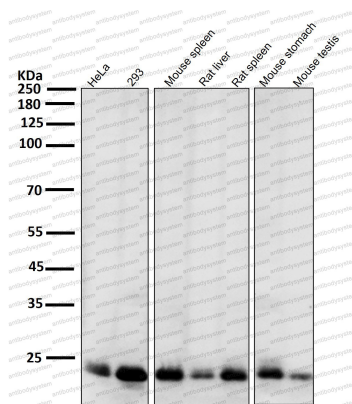
Immunohistochemical

Immunohistochemical analysis of paraffin-embedded Human prostate cancer, using the Antibody at 1:100 dilution.



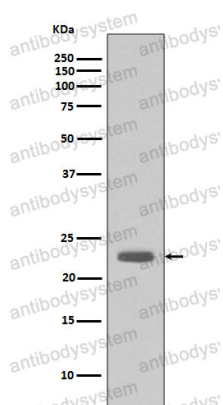
Western blot

All lanes use the Antibody at 1:2K dilution for 1 hour at room temperature.



Western blot

All lanes use the Antibody at 1:2K dilution for 1 hour at room temperature.



Western blot

Western blot analysis of Bim expression in A431 cell lysate.