

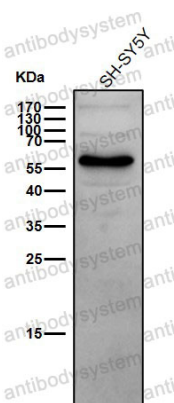
Anti-TCF7L1/TCF3 Antibody (R1B21)

Summary

Catalog No.	RHK59601
Clone ID	R1B21
Host species	Rabbit
Tested applications	FCM: 1:20-1:100, WB: 1:1000-1:2000
Species reactivity	Human
Form	Liquid
Storage buffer	0.01M PBS, pH 7.4, 0.05% BSA, 50% Glycerol, 0.05% Sodium azide.
Concentration	1 mg/ml
Purity	>95% by SDS-PAGE.
Clonality	Monoclonal
Isotype	IgG
Applications	FCM, WB
Target	Transcription factor 7-like 1, HMG box transcription factor 3, TCF-3, TCF7L1, TCF3, TCF7L1
Purification	Protein A/G purified from cell culture supernatant.
Endotoxin level	Please contact with the lab for this information.
Accession	Q9HCS4
Stability and Storage	Use a manual defrost freezer and avoid repeated freeze-thaw cycles. Store at +4 °C short term (1-2 weeks). Store at -20 °C 12 months. Store at -80 °C long term.

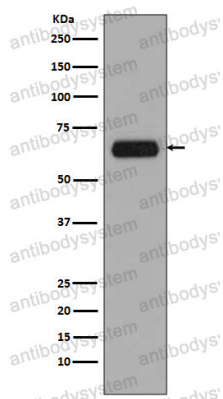
Note

For research use only.

Data Image

Western blot

All lanes use the Antibody at 1:2K dilution for 1 hour at room temperature.



Western blot

Western blot analysis of TCF3 expression in A431 cell lysate.