

Anti-pan-Cadherin Antibody (R1B15)

Summary

Catalog No.	RHC95202
Clone ID	R1B15
Host species	Rabbit
Tested applications	FCM: 1:20-1:100, IF: 1:50-1:200, IHC: 1:100-1:200, IP: 1:20-1:50, WB: 1:1000-1:2000
Species reactivity	Human, Mouse, Rat
Form	Liquid
Storage buffer	0.01M PBS, pH 7.4, 0.05% BSA, 50% Glycerol, 0.05% Sodium azide.
Concentration	1 mg/ml
Purity	>95% by SDS-PAGE.
Clonality	Monoclonal
Isotype	IgG
Applications	FCM, IF, IHC, IP, WB
Target	Cadherin, CDH3, CDHP, Cadherin-1, Cadherin-2, Cadherin-3, Cadherin-4, Cadherin-5, CAM 120/80, CD144, CD324, CD325, Cdh4, CDH5, CDHE, CDHN, E-cadherin, N-cadherin, NCAD, Neural cadherin, P-cadherin, Uvomorulin, Vascular endothelial cadherin, Cadherin
Purification	Protein A/G purified from cell culture supernatant.
Endotoxin level	Please contact with the lab for this information.
Accession	P12830, P19022, P22223, P33151, P55283, P39038

Recombinant Proteins & Antibodies

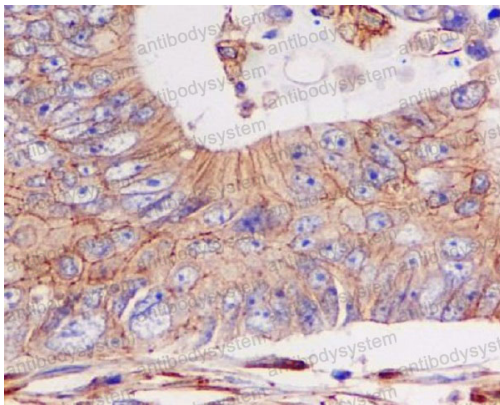
Stability and Storage

Use a manual defrost freezer and avoid repeated freeze-thaw cycles.

Store at +4 °C short term (1-2 weeks). Store at -20 °C 12 months. Store at -80 °C long term.

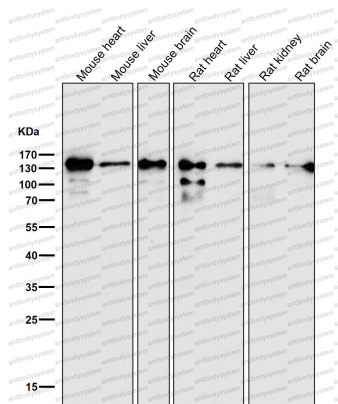
Note

For research use only.

Data Image

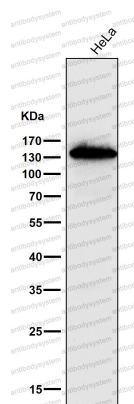
Immunohistochemical

Immunohistochemical analysis of paraffin-embedded colon cancer, using pan Cadherin Antibody .



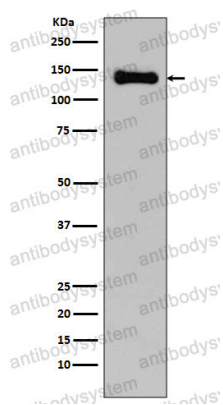
Western blot

All lanes use the Antibody at 1:2K dilution for 1 hour at room temperature.



Western blot

All lanes use the Antibody at 1:2K dilution for 1 hour at room temperature.



Western blot

Western blot analysis of pan Cadherin expression in C6 cell lysate.