

Anti-CDC7 Antibody (R1B03)

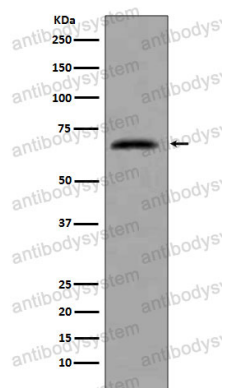
Summary

Catalog No.	RHA09001
Clone ID	R1B03
Host species	Rabbit
Tested applications	FCM: 1:20-1:100, WB: 1:1000-1:2000
Species reactivity	Human, Mouse, Rat
Form	Liquid
Storage buffer	0.01M PBS, pH 7.4, 0.05% BSA, 50% Glycerol, 0.05% Sodium azide.
Concentration	1 mg/ml
Purity	>95% by SDS-PAGE.
Clonality	Monoclonal
Isotype	IgG
Applications	FCM, WB
Target	Cell division cycle 7-related protein kinase, EC 2.7.11.1, CDC7-related kinase, HsCdc7, huCdc7, CDC7, CDC7L1, Hsk1, CDC7 kinase, CDC7
Purification	Protein A/G purified from cell culture supernatant.
Endotoxin level	Please contact with the lab for this information.
Accession	O00311
Stability and Storage	Use a manual defrost freezer and avoid repeated freeze-thaw cycles. Store at +4 °C short term (1-2 weeks). Store at -20 °C 12 months. Store at -80 °C long term.

Note

For research use only.

Data Image



Western blot

Western blot analysis of extracts from HeLa cells,
using CDC7 antibody.