

Anti-NOTCH1 Antibody (R1A99)

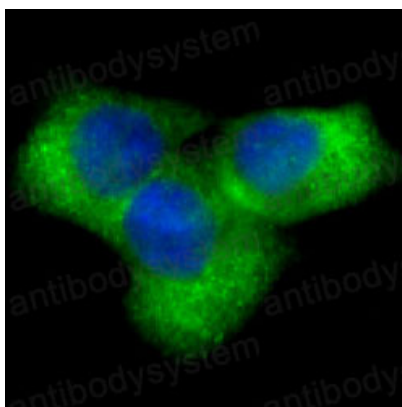
Summary

Catalog No.	RHE48305
Clone ID	R1A99
Host species	Rabbit
Tested applications	FCM: 1:20-1:100, IF: 1:50-1:200, IHC: 1:100-1:200, WB: 1:1000-1:2000
Species reactivity	Human, Mouse
Form	Liquid
Storage buffer	0.01M PBS, pH 7.4, 0.05% BSA, 50% Glycerol, 0.05% Sodium azide.
Concentration	1 mg/ml
Purity	>95% by SDS-PAGE.
Clonality	Monoclonal
Isotype	IgG
Applications	FCM, IF, IHC, WB
Target	NOTC1, NOTCH1, TAN1, hN1, neurogenic locus notch homolog protein 1, neurogenic locus notch homolog protein 1 precursor, Notch 1
Purification	Protein A/G purified from cell culture supernatant.
Endotoxin level	Please contact with the lab for this information.
Accession	P46531
Stability and Storage	Use a manual defrost freezer and avoid repeated freeze-thaw cycles. Store at +4 °C short term (1-2 weeks). Store at -20 °C 12 months. Store at -80 °C long term.

Note

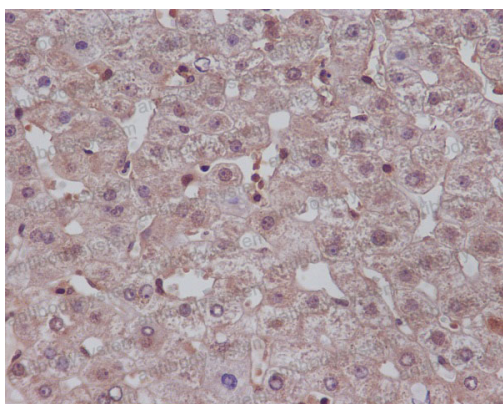
For research use only.

Data Image



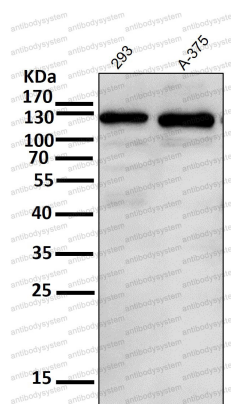
Immunofluorescence

Immunofluorescent analysis of HeLa cells, using Notch1 Antibody .



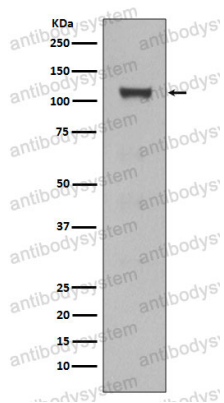
Immunohistochemical

Immunohistochemical analysis of paraffin-embedded human liver, using Notch1 Antibody .



Western blot

All lanes use the Antibody at 1:1K dilution for 1 hour at room temperature.



Western blot

Western blot analysis of NOTCH1 expression in HEK293 cell lysate.