

Anti-CD86/B7-2 Antibody (R1A97)

Summary

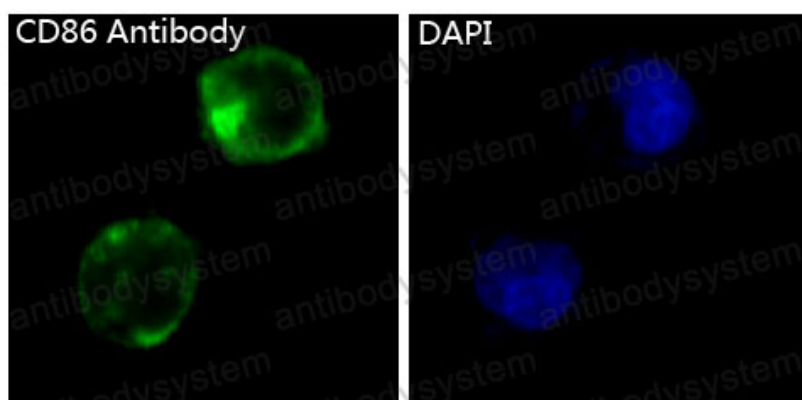
Catalog No.	RHE33802
Clone ID	R1A97
Host species	Rabbit
Tested applications	FCM: 1:20-1:100, IF: 1:50-1:200, IHC: 1:100-1:200, IP: 1:20-1:50, WB: 1:1000-1:2000
Species reactivity	Human, Mouse, Rat
Form	Liquid
Storage buffer	PBS with 0.05% sodium azide, 0.05% BSA and 50% glycerol
Concentration	2 mg/ml
Purity	>95% by SDS-PAGE.
Clonality	Monoclonal
Isotype	IgG
Applications	FCM, IF, IHC, IP, WB
Target	CD86, B7-2, B70, CD28LG2, LAB72, MGC34413, CTLA4 counter receptor B72, CLS1, Ly58, MB7, CD86
Purification	Protein A/G purified from cell culture supernatant.
Endotoxin level	Please contact with the lab for this information.
Accession	P42081

Stability and Storage

Use a manual defrost freezer and avoid repeated freeze-thaw cycles. Store at +4 °C short term (1-2 weeks). Store at -20 °C 12 months. Store at -80 °C long term.

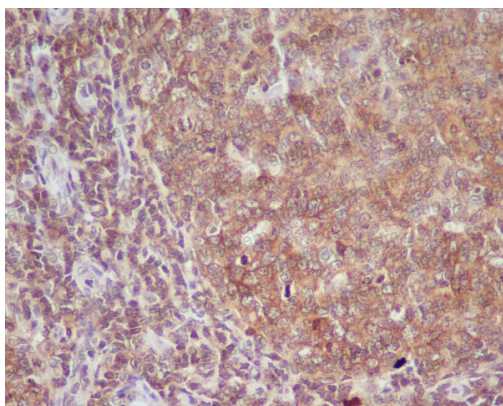
Note

For research use only.

Data Image

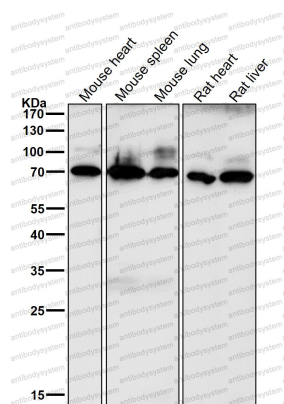
Immunofluorescent analysis of K562 cells, using CD86 Antibody .

Immunofluorescence



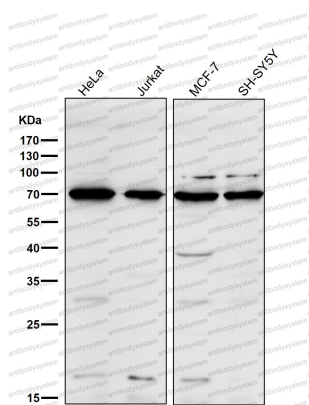
Immunohistochemical analysis of paraffin-embedded human tonsil, using CD86 Antibody .

Immunohistochemical



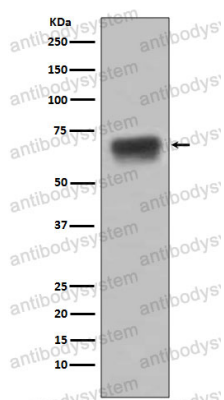
Western blot

All lanes use the Antibody at 1:2K dilution for 1 hour at room temperature.



Western blot

All lanes use the Antibody at 1:2K dilution for 1 hour at room temperature.



Western blot

Western blot analysis of CD86 expression in Raji cell lysate.