

Recombinant Human IL6 Protein, C-His

Summary

Catalog No.	EHC15802
Alternative Names	Hybridoma growth factor, BSF-2, IFN-beta-2, CDF, IL6, Interleukin-6, IL-6, B-cell stimulatory factor 2, Interferon beta-2, IFNB2, CTL differentiation factor
Form	Lyophilized
Storage buffer	Lyophilized from a solution in PBS pH 7.4, 1mM EDTA, 4% Trehalose, 1% Mannitol.
Purity	>90% as determined by SDS-PAGE.
Applications	ELISA, Immunogen, SDS-PAGE, WB, Bioactivity testing in progress
Endotoxin level	Please contact with the lab for this information.
Expression system	Mammalian Cells
Accession	P05231
Protein length	Val30-Met212
Nature	Recombinant
Predicted molecular weight	16.74 kDa
Stability and Storage	Use a manual defrost freezer and avoid repeated freeze thaw cycles. Store at 2 to 8°C for frequent use. Store at -20 to -80°C for twelve months from the date of receipt.
Reconstitution	Reconstitute in sterile water for a stock solution.
Species	Homo sapiens (Human)

Recombinant Proteins & Antibodies

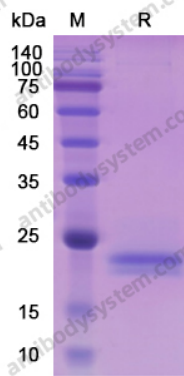
Shipping

In general, proteins are provided as lyophilized powder/frozen liquid. They are shipped out with dry ice/blue ice unless customers require otherwise.

Note

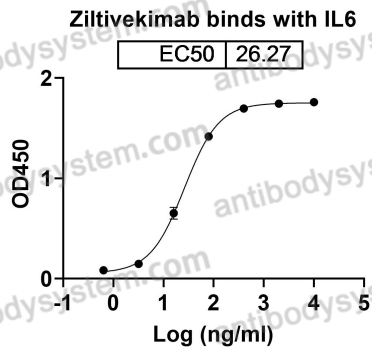
For research use only.

Data Image



SDS-PAGE

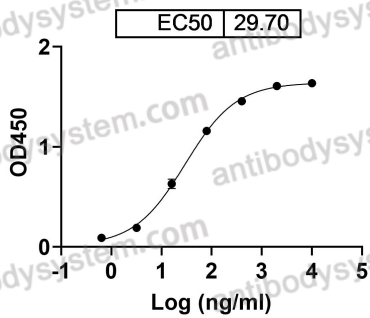
SDS PAGE for recombinant Human IL6



Bioactivity

Detects Ziltivekimab in indirect ELISAs.

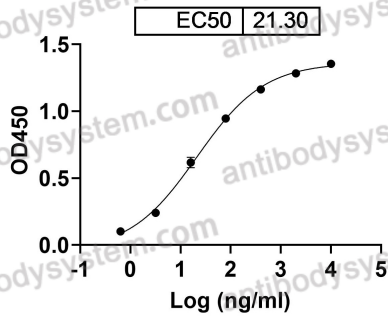
Sirukumab binds with IL6



Detects Sirukumab in indirect ELISAs.

Bioactivity

Olokizumab binds with IL6



Detects Olokizumab in indirect ELISAs.

Bioactivity