

# Anti-Phospho-Histone H3 (S10) Antibody (R1A82)

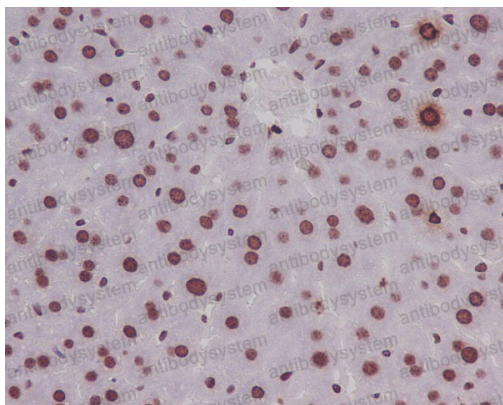
## Summary

---

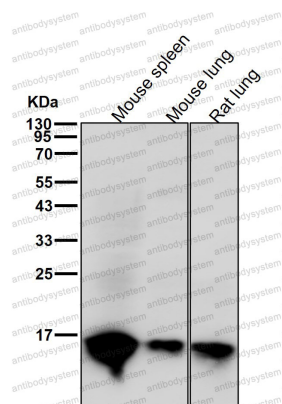
<b>Catalog No.</b>	RHF62714
<b>Clone ID</b>	R1A82
<b>Host species</b>	Rabbit
<b>Tested applications</b>	IF: 1:50-1:200, IHC: 1:100-1:200, IP: 1:20-1:50, WB: 1:1000-1:2000
<b>Species reactivity</b>	Human, Mouse, Rat
<b>Form</b>	Liquid
<b>Storage buffer</b>	0.01M PBS, pH 7.4, 0.05% BSA, 50% Glycerol, 0.05% Sodium azide.
<b>Concentration</b>	1 mg/ml
<b>Purity</b>	>95% by SDS-PAGE.
<b>Clonality</b>	Monoclonal
<b>Isotype</b>	IgG
<b>Applications</b>	IF, IHC, IP, WB
<b>Target</b>	H3 histone, family 3A, H3 histone, family 3B (H3.3B), H3.3A, H3.3B, H33, H3F3, H3F3A, H3F3B, Histone H3.3, p-Histone H3 (S11)
<b>Purification</b>	Protein A/G purified from cell culture supernatant.
<b>Endotoxin level</b>	Please contact with the lab for this information.
<b>Accession</b>	P68431
<b>Stability and Storage</b>	Use a manual defrost freezer and avoid repeated freeze-thaw cycles. Store at +4 °C short term (1-2 weeks). Store at -20 °C 12 months. Store at -80 °C long term.

**Note**

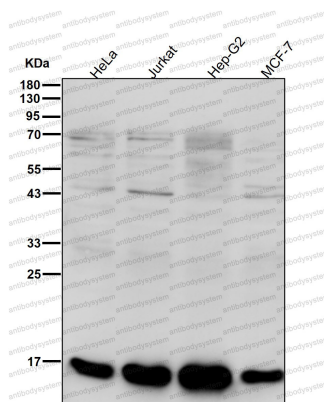
For research use only.

**Data Image****Immunohistochemical**

Immunohistochemical analysis of paraffin-embedded mouse liver, using Phospho-Histone H3 (S10) Antibody.

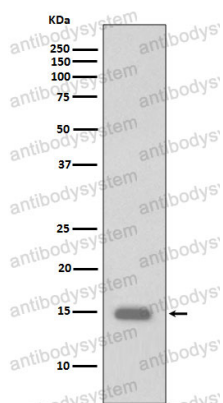
**Western blot**

All lanes use the Antibody at 1:1K dilution for 1 hour at room temperature.



Western blot

All lanes use the Antibody at 1:1K dilution for 1 hour at room temperature.



Western blot

Western blot analysis of Phospho-Histone H3 (S10) expression in HeLa cell lysate treated with calyculin A.