

Anti-ACTA1/Alpha Actin Antibody (R1A71)

Summary

Catalog No.	RHF62102
Clone ID	R1A71
Host species	Rabbit
Tested applications	FCM: 1:20-1:100, IF: 1:50-1:200, IHC: 1:100-1:200, IP: 1:20-1:50, WB: 1:1000-1:2000
Species reactivity	Human, Mouse, Rat
Form	Liquid
Storage buffer	0.01M PBS, pH 7.4, 0.05% BSA, 50% Glycerol, 0.05% Sodium azide.
Concentration	1 mg/ml
Purity	>95% by SDS-PAGE.
Clonality	Monoclonal
Isotype	IgG
Applications	FCM, IF, IHC, IP, WB
Target	ACTA, ACTA1, ACTS, Actin, alpha skeletal muscle, Alpha-actin 1, alpha Skeletal muscle actin
Purification	Protein A/G purified from cell culture supernatant.
Endotoxin level	Please contact with the lab for this information.
Accession	P68133

Stability and Storage

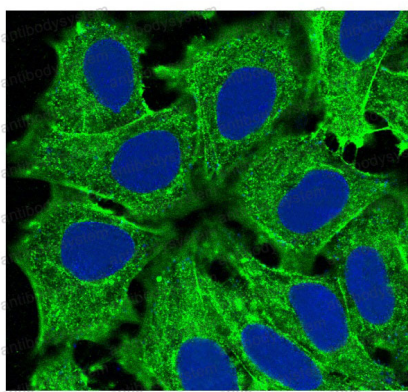
Use a manual defrost freezer and avoid repeated freeze-thaw cycles.

Store at +4 °C short term (1-2 weeks). Store at -20 °C 12 months. Store at -80 °C long term.

Note

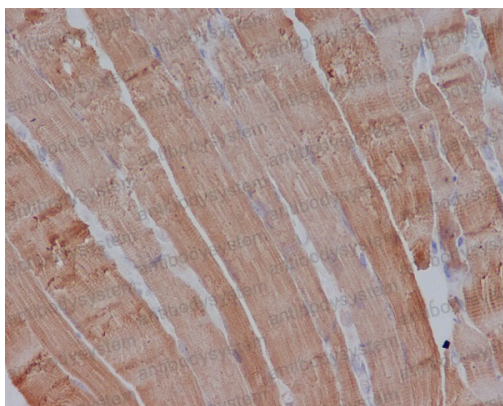
For research use only.

Data Image



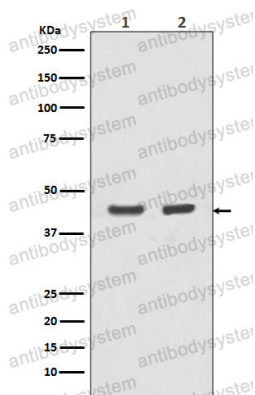
Immunofluorescence

Immunofluorescent analysis of Hela cells, using Actin (Alpha-Actin) Antibody .



Immunohistochemical

Immunohistochemical analysis of paraffin-embedded mouse muscle, using Actin (Alpha-Actin) Antibody.



Western blot

Western blot analysis of Actin (Alpha-Actin) expression in (1) A431 cell lysate; (2) MCF-7 cell lysate.