

Anti-Phospho-MLKL (S345) Antibody (R1A65)

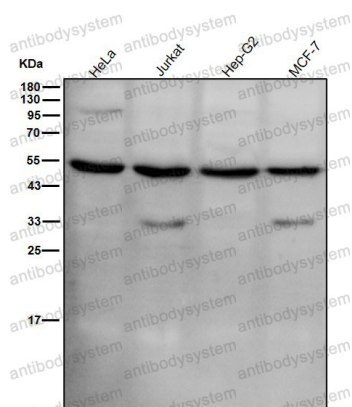
Summary

Catalog No.	RMJ23601
Clone ID	R1A65
Host species	Rabbit
Tested applications	IP: 1:20-1:50, WB: 1:1000-1:2000
Species reactivity	Mouse
Form	Liquid
Storage buffer	0.01M PBS, pH 7.4, 0.05% BSA, 50% Glycerol, 0.05% Sodium azide.
Concentration	1 mg/ml
Purity	>95% by SDS-PAGE.
Clonality	Monoclonal
Isotype	IgG
Applications	IP, WB
Target	hMLKL, Mixed lineage kinase domain like, Mixed lineage kinase domain like protein, Mixed lineage kinase domain like pseudokinase, p-Mlkl (S345)
Purification	Protein A/G purified from cell culture supernatant.
Endotoxin level	Please contact with the lab for this information.
Accession	Q9D2Y4
Stability and Storage	Use a manual defrost freezer and avoid repeated freeze-thaw cycles. Store at +4 °C short term (1-2 weeks). Store at -20 °C 12 months. Store at -80 °C long term.

Note

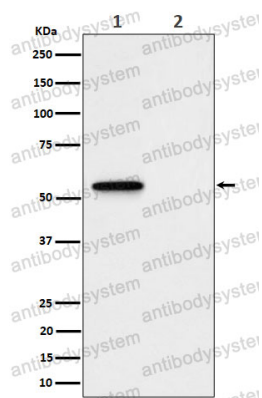
For research use only.

Data Image



Western blot

All lanes use the Antibody at 1:1K dilution for 1 hour at room temperature.



Western blot

Western blot analysis of Phospho-MLKL (S345) expression in (1) L929 treated with Z-VAD + TNF alpha + SM164 cell lysate; (2) Untreated.