

Anti-CCL19/MIP-3-beta Antibody (R1A64)

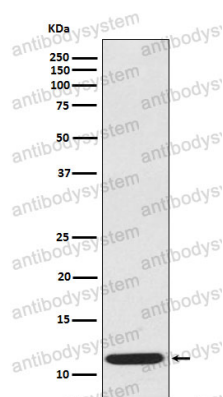
Summary

Catalog No.	RHJ46501
Clone ID	R1A64
Host species	Rabbit
Tested applications	WB: 1:1000-1:2000
Species reactivity	Human
Form	Liquid
Storage buffer	0.01M PBS, pH 7.4, 0.05% BSA, 50% Glycerol, 0.05% Sodium azide.
Concentration	1 mg/ml
Purity	>95% by SDS-PAGE.
Clonality	Monoclonal
Isotype	IgG
Applications	WB
Target	CCL 19, CK beta 11, EBI 1 ligand chemokine, ELC, Exodus3, MIP3 beta, SCYA 19, SCYA19, CCL19
Purification	Protein A/G purified from cell culture supernatant.
Endotoxin level	Please contact with the lab for this information.
Accession	Q99731
Stability and Storage	Use a manual defrost freezer and avoid repeated freeze-thaw cycles. Store at +4 °C short term (1-2 weeks). Store at -20 °C 12 months. Store at -80 °C long term.

Note

For research use only.

Data Image



Western blot

Western blot analysis of extracts from CCL19 recombinant protein, using CCL19 antibody.