

# Anti-RAD51 Antibody (R1A40)

## Summary

---

<b>Catalog No.</b>	RHG09801
<b>Clone ID</b>	R1A40
<b>Host species</b>	Rabbit
<b>Tested applications</b>	FCM: 1:20-1:100, IF: 1:50-1:200, IHC: 1:100-1:200, IP: 1:20-1:50, WB: 1:1000-1:5000
<b>Species reactivity</b>	Human, Mouse, Rat
<b>Form</b>	Liquid
<b>Storage buffer</b>	0.01M PBS, pH 7.4, 0.05% BSA, 50% Glycerol, 0.05% Sodium azide.
<b>Concentration</b>	1 mg/ml
<b>Purity</b>	>95% by SDS-PAGE.
<b>Clonality</b>	Monoclonal
<b>Isotype</b>	IgG
<b>Applications</b>	FCM, IF, IHC, IP, WB
<b>Target</b>	RAD51 homolog A, DNA repair protein RAD51 homolog 1, RAD51A, RECAhomolog <i>S. cerevisiae</i> , RAD51A, RECA, Rad 51, RecA homolog <i>E. coli</i> , RecA like protein, RAD51
<b>Purification</b>	Protein A/G purified from cell culture supernatant.
<b>Endotoxin level</b>	Please contact with the lab for this information.
<b>Accession</b>	Q06609

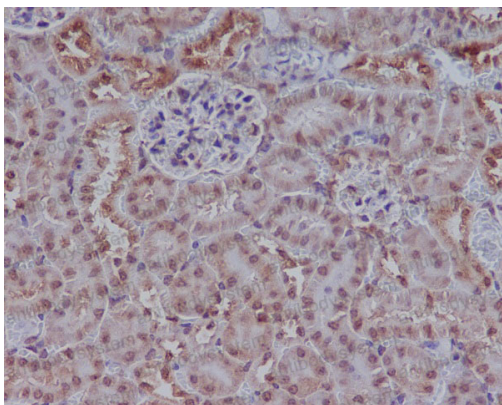
**Stability and Storage**

Use a manual defrost freezer and avoid repeated freeze-thaw cycles.

Store at +4 °C short term (1-2 weeks). Store at -20 °C 12 months. Store at -80 °C long term.

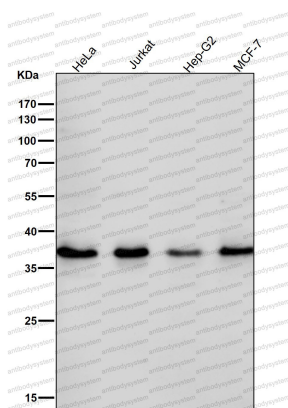
**Note**

For research use only.

**Data Image**

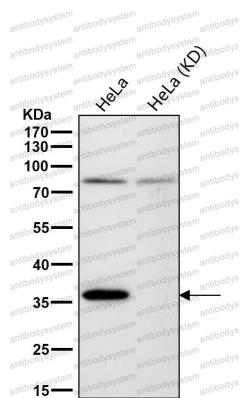
Immunohistochemical

Immunohistochemical analysis of paraffin-embedded mouse kidney, using Rad51 Antibody.



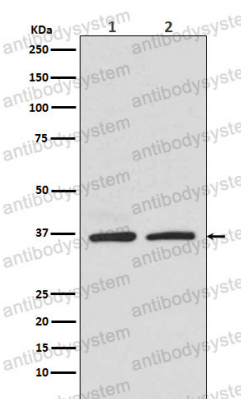
Western blot

All lanes use the Antibody at 1:3K dilution for 1 hour at room temperature.



Western blot

All lanes use the Antibody at 1:5K dilution for 1 hour at room temperature.



Western blot

Western blot analysis of Rad51 in (1)HEK293 cell lysate; (2)K562 cell lysate.