

# Anti-FOXO3 Antibody (R1A39)

## Summary

---

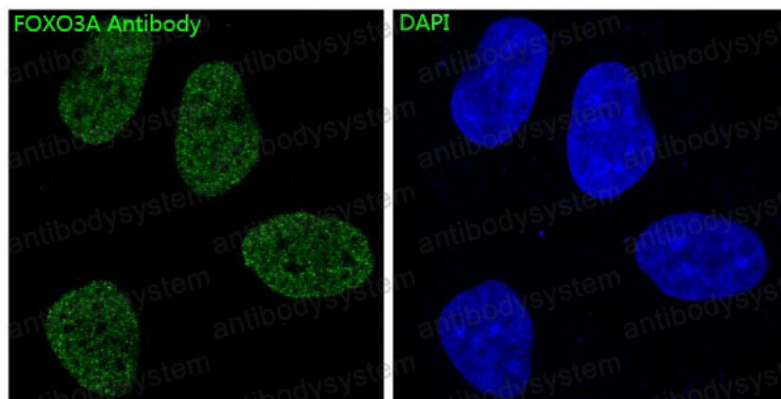
<b>Catalog No.</b>	RHA69801
<b>Clone ID</b>	R1A39
<b>Host species</b>	Rabbit
<b>Tested applications</b>	IF: 1:50-1:200, IHC: 1:100-1:200, WB: 1:1000-1:2000
<b>Species reactivity</b>	Human
<b>Form</b>	Liquid
<b>Storage buffer</b>	0.01M PBS, pH 7.4, 0.05% BSA, 50% Glycerol, 0.05% Sodium azide.
<b>Concentration</b>	1 mg/ml
<b>Purity</b>	>95% by SDS-PAGE.
<b>Clonality</b>	Monoclonal
<b>Isotype</b>	IgG
<b>Applications</b>	IF, IHC, WB
<b>Target</b>	Forkhead box protein O3, AF6q21 protein, Forkhead in rhabdomyosarcoma-like 1, FOXO3, FKHL1, FOXO3A, FOXO3A
<b>Purification</b>	Protein A/G purified from cell culture supernatant.
<b>Endotoxin level</b>	Please contact with the lab for this information.
<b>Accession</b>	O43524
<b>Stability and Storage</b>	Use a manual defrost freezer and avoid repeated freeze-thaw cycles. Store at +4 °C short term (1-2 weeks). Store at -20 °C 12 months. Store at -80 °C long term.

Note

For research use only.

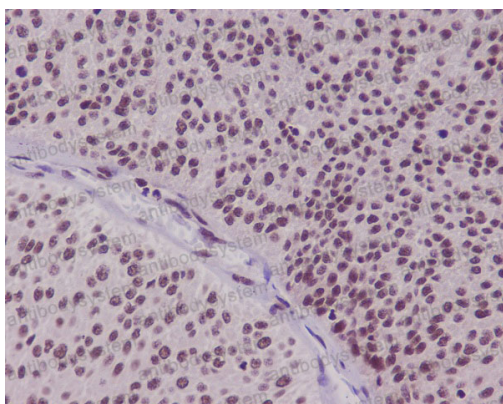
## Data Image

---



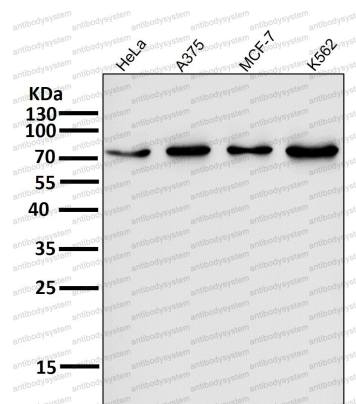
Immunofluorescence

Immunofluorescent analysis of HeLa cells, using FoxO3a Antibody .



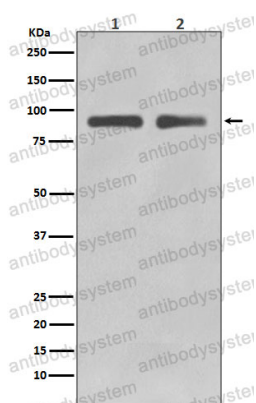
Immunohistochemical

Immunohistochemical analysis of paraffin-embedded human bladder carcinoma, using FoxO3a Antibody.



Western blot

All lanes use the Antibody at 1:1K dilution for 1 hour at room temperature.



Western blot

Western blot analysis of FoxO3a in (1) Jurkat cell lysate; (2) SH-SY5Y cell lysate.