

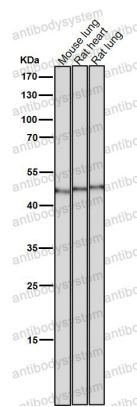
Anti-FLOT2/Flotillin-2 Antibody (R1A17)

Summary

Catalog No.	RHG77001
Clone ID	R1A17
Host species	Rabbit
Tested applications	IP: 1:20-1:50, WB: 1:1000-1:2000
Species reactivity	Human, Mouse, Rat
Form	Liquid
Storage buffer	0.01M PBS, pH 7.4, 0.05% BSA, 50% Glycerol, 0.05% Sodium azide.
Concentration	1 mg/ml
Purity	>95% by SDS-PAGE.
Clonality	Monoclonal
Isotype	IgG
Applications	IP, WB
Target	epidermal surface antigen, ESA, flotillin-2, Membrane component chromosome 17 surface marker 1, ESA1, M17S1, Flotillin 2
Purification	Protein A/G purified from cell culture supernatant.
Endotoxin level	Please contact with the lab for this information.
Accession	Q14254
Stability and Storage	Use a manual defrost freezer and avoid repeated freeze-thaw cycles. Store at +4 °C short term (1-2 weeks). Store at -20 °C 12 months. Store at -80 °C long term.

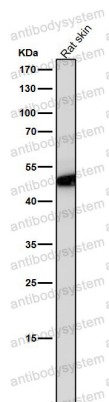
Note For research use only.

Data Image



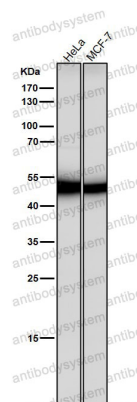
Western blot

All lanes use the Antibody at 1:2K dilution for 1 hour at room temperature.



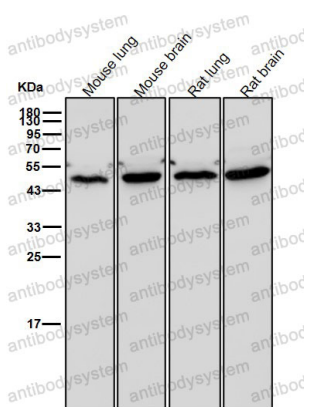
Western blot

All lanes use the Antibody at 1:2K dilution for 1 hour at room temperature.



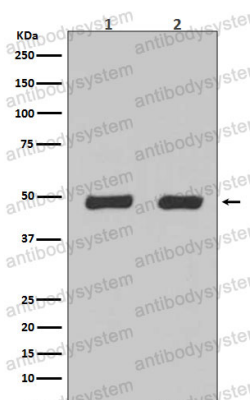
Western blot

All lanes use the Antibody at 1:2K dilution for 1 hour at room temperature.



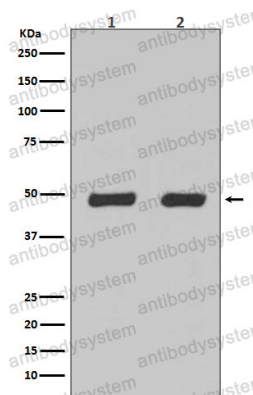
Western blot

All lanes use the Antibody at 1:2K dilution for 1 hour at room temperature.



Western blot

Western blot analysis of Flotillin-2 expression in (1) HeLa cell lysate;(2) 293 cell lysate.



Western blot

Western blot analysis of Flotillin-2 expression in (1) HeLa cell lysate; (2) 293 cell lysate.