

Anti-CD324/CDH1 Antibody (R1A06)

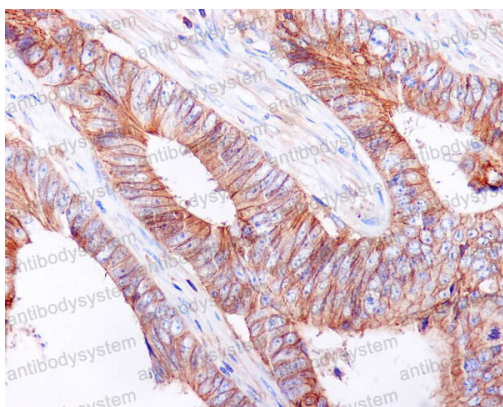
Summary

Catalog No.	RHC95201
Clone ID	R1A06
Host species	Rabbit
Tested applications	FCM: 1:20-1:100, IF: 1:50-1:200, IHC: 1:100-1:200, WB: 1:1000-1:5000
Species reactivity	Human
Form	Liquid
Storage buffer	0.01M PBS, pH 7.4, 0.05% BSA, 50% Glycerol, 0.05% Sodium azide.
Concentration	1 mg/ml
Purity	>95% by SDS-PAGE.
Clonality	Monoclonal
Isotype	IgG
Applications	FCM, IF, IHC, WB
Target	Arc1, Cadherin 1, CAM 120/80, CD324, CDHE, E-Cad/CTF3, ECAD, Epithelial cadherin, LCAM, Uvomorulin, CDH1, E Cadherin
Purification	Protein A/G purified from cell culture supernatant.
Endotoxin level	Please contact with the lab for this information.
Accession	P12830
Stability and Storage	Use a manual defrost freezer and avoid repeated freeze-thaw cycles. Store at +4 °C short term (1-2 weeks). Store at -20 °C 12 months. Store at -80 °C long term.

Note

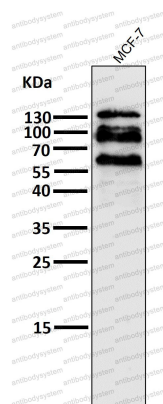
For research use only.

Data Image



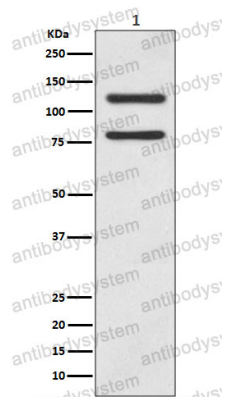
Immunohistochemical

Immunohistochemical analysis of paraffin-embedded human colon cancer, using E Cadherin Antibody.



Western blot

All lanes use the Antibody at 1:5K dilution for 1 hour at room temperature.



Western blot

Western blot analysis of E-cadherin expression in MCF7 cell lysate.